



On-line PICASSO PROJECT

**Comprehensive Catalogue Raisonné
Prof. Dr. Enrique Mallen**

1921



Portrait d'Edith de Beaumont. Paris. January/1921. Pencil on paper. 55 x 40 cm. Sotheby's. #40, L06007, 06/19/06.

OPP.21:173

La danse villageoise. [Paris]. Early/1921 [~1922]. Fixed pastel & oil on canvas. 139,5 x 85,5 cm. Musée Picasso, Paris. Dation 1979.

OPP.21:027; MPP:73; P.III:1159; PP.22:018; Z.XXX:270; AB.07*:324p; AB.12*:157p; BD.16:51p; BJ.19*:n/a; DC.87:313; FS.82:107p; GP.96:138p; HN.00*:61; JC.98*:215; KS.89:195; LN.80:8; LO.90c:297p; MA.08a*:n/a; MN.80*:n/a; MP.85:71; NH.94:38p; PA.79a*:118; PD.09:239p; PP.20*:155; SD.05*:42; SY.11*:n/a; TY.03*:n/a; UP.00:505; VR.90:52p; WR.80*:234p; WW.91:280p





Deux baigneurs. Paris. [1920~] Early/1921 [~1923]. Oil on canvas. 33 x 41 cm. Musée d'Art Moderne du Nord, Villeneuve-d'Ascq. On loan from Musée Picasso, Paris. Jacqueline Roque Picasso Collection. Dation 1990.

OPP.21:029; MPP:1990.8; P.III:979; PP.21:042; AM.05*:n/a; BE.09:227p; CK.04*:20; GP.96:142p; GR.90*:6; JC.98*:201; MA.08a*:n/a; MA.86*:10; ND.01*:13; TY.03*:n/a

Portrait de Mlle. Eugenia Errázuriz. Paris. Early/1921. Graphite, with traces of erasing on off-white wove paper. [30 x 23,4] 29,8 x 23,5 cm. The Art Institute of Chicago. (Inv 1963.415). Gift of the Estate of Grant J. Pick.

OPP.21:247; PP.21:029; Z.XXX:144; CH.70a*:9p; CH.87*:n/a; GT.81*:18; MF.95:21; WR.96:58p





Deux baigneurs. Paris. [Early]/1921. Oil on canvas. 14 x 17 cm. The Barnes Foundation, Merion, PA. (Inv BF.283).

OPP.21:324

Femme assise dans un fauteuil. Paris. [Early]/1921. Graphite on paper. 16,5 x 10,5 cm. Private collection.

OPP.21:382; PP.21:028a; Z.XXX:143





Portrait de femme. Paris. [Early]/1921. Oil & graphite on tracing paper. 57 x 37 cm. Private collection.

OPP.21:383; PP.21:028; Z.XXX:146

Portrait de Pierre M. Paris. [Early]/1921 [1922]. Graphite on paper. 25 x 16 cm. Private collection.

OPP.21:388; PP.21:035; Z.XXX:247





Tête de femme. Paris. [Summer] 1st-Quarter/1921. Oil on canvas. 55 x 46 cm. Musée Picasso, Paris. Dation 1979.

OPP.21:057; MPP:66; P.III:956; PP.21:286; Z.XXX:236; BD.16*:40; CK.04*:18; GC.96:172p; GG.06*:n/a; MA.08a*:n/a; ME.82a*:37; MN.80*:n/a; MP.85:65; PA.79a*:n/a; PF.07*:n/a; TG.94*:87; TY.03*:n/a; UW.88*:35; VR.90*:21; WR.02*:n/a

Guitare, compotier et tableau. Paris. 1st-Quarter/1921. Pencil on paper. [27 x 21] 27,5 x 21,5 cm. Museo Picasso, Málaga. On temporary loan from Fundación Almine & Bernard Ruiz-Picasso para el Arte.

OPP.21:058; P.III:959; DP.20*:44





Femme drapée debout. Paris. 1st-Quarter/1921. Sanguine on beige paper. [29 x 22] 29,5 x 22,3 cm. Christie's. #415, 21032, 06/29/22. Formerly Heinz Berggruen, Paris.

OPP.21:065; P.III:975; PP.21:189; Z.IV:237; BL.06*:116p; GE.88a*:83; PA.27b*:96

Deux baigneurs. Paris. 1st-Quarter/1921. Oil on wood. 16 x 20 cm. The Picasso Estate.

OPP.21:078; P.III:991; PP.21:054; Z.IV:264; UP.00:501





Taureau et cheval. Paris. 1st-Quarter/1921 [1925]. Lead pencil on beige paper. 25 x 32,3 cm. Museum Ludwig, Köln. (Inv L/Z 2001/048). Schenkung 2001. Formerly Marina Picasso Collection. (Inv 03143).

OPP.21:080; P.III:994; PP.21:060; Z.V:440; GG.87:21p; MP.81*:135; PA.93a*:35; UW.88*:46; WO.92*:25

Nature morte au paquet de cigarettes. Paris. [Spring/1921] 1st-Quarter/1922. Oil on canvas. 21 x 31,5 cm. Sprengel Museum, Hannover. Schenkung von Margrit und Bernhard Sprengel, Hannover, 1969.

OPP.21:279; P.III:1165; PP.21:089; Z.VI:1411; KB.99*:8; MS.24*:9





Portrait d'Igor Stravinsky. Paris. Pre-May/1921.
Reproduction on the official program of the Ballets Russes de Serge de Diaghilew: quatorzième saison, Théâtre de la Gaîté-Lyrique [After *Portrait d'Igor Stravinsky, de profil*]. S/U. Musée Picasso, Paris. (Inv AID-931 (4, 286-313)).

OPP.21:330

Portrait de Max Jacob. Paris. [Pre-Summer/1921]. Drypoint.
11,9 x 10 cm. Musée Picasso, Paris. Dation 1979.

OPP.21:269; Ba:62; MPP:2020; HS.94*:208; WR.96:192p





Femme assise dans un fauteuil. Paris. 1921~1922 [Spring/1923]. Pencil & white oil on wood. 24 x 19 cm. Fundación Almine & Bernard Ruiz-Picasso para el Arte.

OPP.21:287; P.III:1354; CG.04*:12; JR.14*:113p; MG.04b*:60; MG.18*:106p

La flûte de Pan (Études). Paris. 1921~Summer/1923. Pen & ink on paper. 22,8 x 26 cm. Morton G. Neumann Family Collection, Chicago.

OPP.21:278; PP.23:149; CH.68a*:85; UW.88*:58





Guitare sur un guéridon. Paris. 2-January/1921. [Tempera]
Gouache on paper. [28] 27 x 21 cm. Private collection.

OPP.21:197; P.III:952; PP.21:001; Z.IV:230; BS.55:95;
JB.92:135p



Guitare sur une chaise. Paris. 3-January/1921.
[Tempera] Gouache on paper. 27 x 21 cm. Private
collection, Winterthur, Switzerland.

OPP.21:198; P.III:953; PP.21:002; Z.IV:231;
CH.10*:126p; JB.92:135p; KB.01*:73



La main gauche. Paris. 3-January/1921.
Watercolor on paper [OïC]. 11,5 x 15,5 cm. Private collection.

OPP.21:199; P.III:954; PP.21:005; Z.XXX:129;
UW.88:25a

Guitare sur une chaise. Paris. 3-January/1921.
Gouache. 27 x 21 cm. H. L. Mermod Collection, Lausanne.

OPP.21:255; PP.21:004; Z.IV:233; JC.59:51p





Guitare sur une chaise. Paris. 3-January/1921. Gouache on paper. 26,9 x 21,4 cm. Sotheby's. #412, L21007, 06/03/21. Formerly Sotheby's. #121, N09140, 05/08/14.

OPP.21:280; PP.21:003; Z.IV:232

Nature morte à la guitare. Paris. 7-January/1921. Gouache & oil on paper. [20,3 x 26,7] 20,5 x 26 cm. E and R Cyzer 20th Century Art. 2008. Formerly Sotheby's. #319, N08360, 11/08/07.

OPP.21:183



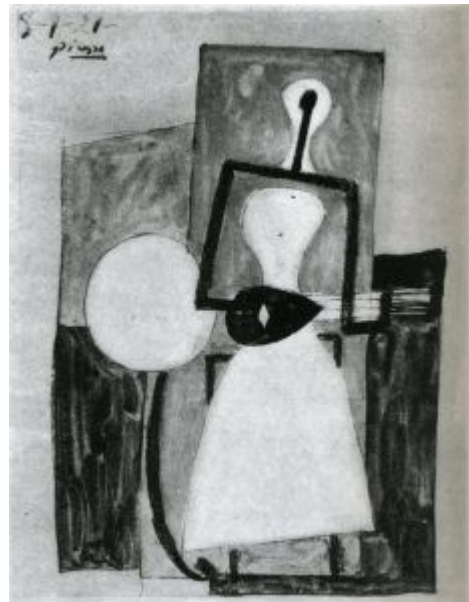


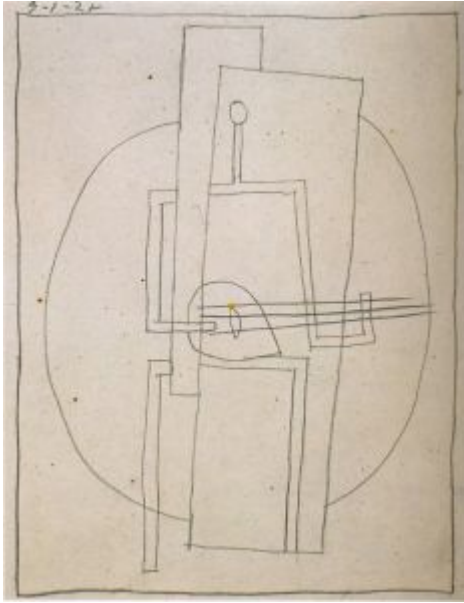
Compotier et guitare. Paris. 8-January/1921. [Tempera] Gouache on paper [OïC]. 21 x 27 cm. Private collection, New York. Formerly Walter P. Chrysler, Jr. Collection.

OPP.21:200; P.III:955; PP.21:008; Z.IV:240; AB.39a*:162; AB.46:121p; RI.41*:230; SF.39a*:Y-197

Femme à la guitare. Paris. 8-January/1921. [Tempera] gouache on paper [OïC]. 27 x 21 cm. Private collection.

OPP.21:204; P.III:962; PP.21:009; Z.XXX:130





Femme à la guitare. Paris. 9-January/1921. Pencil on paper.
27 x 21 cm. The Picasso Estate.

OPP.21:060; P.III:963

Un coin d'atelier. Paris. 9-January/1921.
Watercolor. 21 x 27 cm. The Phillips
Collection, Washington, DC. Formerly
Duncan C. and Marjorie Phillips Collection.

OPP.21:274; PP.21:010; Z.IV:241;
CH.37b*:124; WA.30*:70; WA.31b*:42;
WA.38a*:19





Portrait de Mlle. Eugenia Errázuriz. Paris. 10-January/1921. Charcoal & gesso on prepared paper. 105 x 74 cm. Christie's. #44, 9516, 11/08/00. Formerly Eugenia Huici Arguedas de Errázuriz Collection.

OPP.21:031; P.III:960; PP.21:011; Z.IV:222; WR.96:59p

Buste de femme nue. Paris. 11-January/1921. Watercolor on paper. 16 x 10,5 cm. Sotheby's. #14, L17007, 06/21/17.

OPP.21:201; P.III:957; PP.21:013; Z.XXX:131; ZU.88*:10





Guitare sur un guéridon. Paris. 12-January/1921. Watercolor, gouache & graphite on wove paper. 27,6 x 21,2 cm. Private collection. Formerly Douglas Cooper Collection.

OPP.21:192; PP.21:014; Z.IV:234; DK.87*:73; GT.81*:66



Nature morte et femme à la guitare. Paris. 21-January/1921. Gouache on paper. 21,6 x 26,7 cm. Bowdoin College Museum of Art, Maine. (Inv 2003.11.61).

OPP.21:248



Guitare et compotier sur un guéridon. Paris. 13-January/1921. [Tempera] gouache on paper. 30,5 x 24,5 cm. E. W. K. Collection, Bern.

OPP.21:202; P.III:958; PP.21:015; Z.XXX:132; CH.10*:126p; KB.01*:72

Nu assis. Paris. 14-January/1921. Pencil on paper. 13,5 x 9,5 cm. Private collection.

OPP.21:059; P.III:967; PP.21:018; Z.XXX:134





Femme nue assise. Paris. 14-January/1921. Pencil on paper. 16 x 11 cm. The Picasso Estate.

OPP.21:061; P.III:964

La sieste. Paris. 14-January/1921. Watercolor on paper. 23,5 x 31,5 cm. Sotheby's. #16, N08987, 05/07/13.

OPP.21:142; PP.21:021; Z.XXX:138





Table avec une guitare. Paris. 14-January/1921. Watercolor, gouache & pencil on paper. 26,4 x 20 cm. Sotheby's. #195, N07721, 11/08/01. Formerly Sotheby's. #63, 07/02/70.

OPP.21:156; PP.21:016; BO.00*:17

La sieste (Les moissonneurs). Paris. 14-January/1921. Watercolor, pencil & gouache on paper. [20 x 27] 21 x 27,5 cm. Sotheby's. #28, N09430, 11/04/15. Formerly Adolph Alfred Taubman Collection; Sotheby's. #15, N08987, 05/07/13.

OPP.21:203; P.III:961; PP.21:020; Z.XXX:137





Carte de vœux pour le Nouvel An russe. Paris. 14-January/1921. Watercolor on paper. 17 x 22 cm. Bibliothèque Nationale de France, Paris.

OPP.21:297; PP.21:019; Z.XXX:136; BH.06*:130p; DC.87:289

Guitare sur la cheminée. Paris. 14-January/1921. Gouache & pencil [Oic]. 13,5 X 10,5 cm. Private collection.

OPP.21:380; PP.21:017; Z.XXX:133





Femme à la cruche. Paris. 15-January/1921. Pencil on white gouache. 16 x 7,8 cm. Private collection. Formerly Sotheby's. #1, 11/29/94.

OPP.21:441; PP.21:022

Deux mains croisées. Paris. 17-January/1921. Lead pencil on paper. 27 x 21 cm. Musée Picasso, Paris. Dation 1979.

OPP.21:159; MPP:956; P.III:965;
PP.21:025; LE.21*:344





Mère et enfant. Paris. 17-January/1921. Lead pencil on paper. [21] 21,2 x 27 cm. Sotheby's. #116, N09140, 05/08/14. Formerly Sotheby's. #137, L07009, 06/20/07.

OPP.21:160; P.III:966; PP.21:023; Z.IV:235

Deux mains croisées. Paris. 17-January/1921. Lead pencil on paper. 21 x 27 cm. Musée Picasso, Paris. Dation 1979.

OPP.21:252; MPP:955; PP.21:024





Étude de main droite. Paris. 20-January/1921.
Pastel on brown paper. [20,9 x 31,6] [22 x 32]
20,9 x 32,1 cm. Sotheby's. #386, N11105,
11/15/22. Formerly Christie's. #437, 9520,
11/09/00; Walter P. Chrysler, Jr. Collection.

OPP.21:049; PP.21:006; Z.IV:239; AB.39a*:157;
AB.46:119p; AB.57*:n/a; NY.37a*:14;
NY.37b*:42; RI.41*:224

Femme nue allongée. Paris. 27-
January/1921. Gouache on paper. 22,5 x
27,8 cm. Sotheby's. #223, L22004,
03/03/22. Formerly Pierre Le Guennec
Collection, France.

OPP.21:423





Nu allongé. Paris. 28-January/1921. [Tempera] gouache on paper. 13,5 x 25,5 cm. The Picasso Estate.

OPP.21:070; P.III:982; PP.21:031; Z.XXX:139

Nu debout. Paris. 28-January/1921. [Tempera] Gouache on paper [OIC]. 19 x 9,2 cm. Private collection.

OPP.21:205; P.III:974; PP.21:030; Z.IV:236





La main. Paris. 28-January/1921. Wax crayon [Oic]. 15,5 X 10,5 cm. Private collection.

OPP.21:381; PP.21:032; Z.XXX:142

Olga alitée. Paris. [February]/1921. Lead pencil on paper. 24 x 34 cm. Fundación Almine & Bernard Ruiz-Picasso para el Arte. (Inv 02678).

OPP.21:053; P.III:1001; PP.21:038;
Z.XXX:150; RO.17*:90





Mère et enfant (Maternité). Paris. February/1921. Pencil on paper. 23,5 x 34,4 cm. The Picasso Estate.

OPP.21:063; P.III:970; PP.21:050; Z.IV:268

Portrait de Mme Etienne de Beaumont. Paris. February/1921. Pencil on paper. 34 x 23,9 cm. Christie's. #225, 7601, 06/25/08.

OPP.21:189; PP.21:034; Z.IV:274; DC.87:325





Femme assise. Paris. February/1921. Graphite. 32,7 x 25 cm. Private collection.

OPP.21:346; PP.21:036; Z.IV:272

Mme Paul Rosenberg et ses enfants. Paris. February/1921. Graphite. S/U. Private collection.

OPP.21:347; PP.21:037; Z.IV:273





Comptoir et guitare. Paris. 2-February/1921. Pastel & ink on paper. 103 x 73 cm. Duhamel Fine Art. 2009. Formerly Sotheby's. #26, N08125, 11/02/05; Christie's. #36, 04/02/90; Maya Widmaier Picasso Collection, Paris.

OPP.21:062; FM:955; P.III:969; PP.21:033; Z.IV:242;
GE.81a*:82/ 71; JB.92:136p; ON.82*:n/a; PA.83b*:n/a;
PA.84e*:13; WP.78*:3

Enfant tétant. Paris. 19-February/1921. Pencil on paper. 17,7 x 11,4 cm. The Picasso Estate.

OPP.21:064; P.III:971; PP.21:039; Z.IV:267





Trois baigneurs. Paris. 26-February/1921. Lead pencil on paper. 31,2 x 22 cm. Musée Picasso, Paris. Dation 1979.

OPP.21:066; MPP:957; P.III:976; PP.21:040; Z.XXX:151;
CB.11:120p; IC.05*:24

Baigneur debout. Paris. 26-February/1921. Wax crayon on paper. [33 x 17] 33,5 x 17,5 cm. Private collection.

OPP.21:067; P.III:977; PP.21:041; Z.XXX:152; BE.09*:51;
WR.96:40p





Les baigneuses sur la plage. Paris. 27-February/1921. Pencil on paper. 22,2 x 32 cm. Christie's. #107, 7736, 06/24/09.

OPP.21:162; DT.37*:109; NY.37b*:24; RI.41*:225; SF.39a*:Y-198

Autoportrait de profil. Paris. March/1921. Lead pencil on paper. 27 x 21 cm. Marina Picasso Collection. (Inv 00775). Courtesy Galerie Jan Krugier, Geneva.

OPP.21:082; P.III:996; PP.21:047; Z.XXX:149; HD.04:29p; LN.80:7; MP.81*:129; PB.21:144; PD.82:137p; UP.00:507; WR.96:148p; WW.91:18p; YP.13:116p



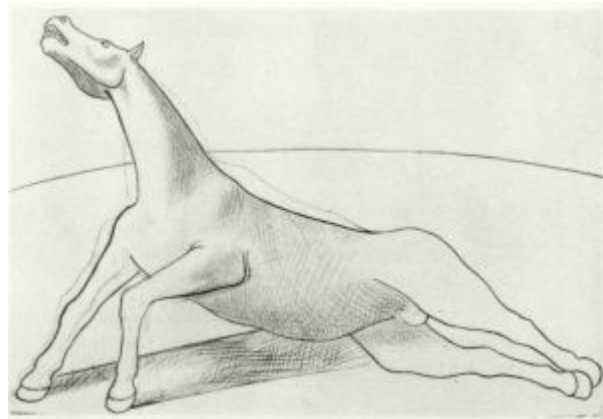


Autoportrait de profil. Paris. March/1921. Wax crayon on paper. 27 x 21 cm. Catherine Hutin-Blay Collection, Paris.

OPP.21:209; P.III:1000; PP.21:046; Z.XXX:141; PB.21:145; WR.96:148p

Course de taureaux. Paris. March/1921. Graphite. 24,5 x 36,2 cm. Private collection.

OPP.21:340; PP.21:062; Z.IV:254





Femme nue assise. Paris. 2-March/1921. Lead pencil on paper. 27,7 [28] x 22,5 cm. The Picasso Estate.

OPP.21:068; P.III:980; PP.21:058; Z.XXX:238

Maternité. Paris. 2-March/1921. Lead pencil on paper. 28 x 22,5 cm. Private collection.

OPP.21:069; P.III:981; PP.21:043; Z.XXX:154





Cavalier et nus féminins sur la plage (Cheval débridé) (Quatre Lithographies). Paris. 7-March/1921. Lithograph. 19,5 x 27 cm. Christie's. #131, 7839, 03/31/10.

OPP.21:072; B.I:40; Ba:228.B; GC:10.1; AC.81:110p; FM.70:8; UW.88*:76; WW.91:278p

Chien-loup. Paris. 7-March/1921. Soft crayon on paper. 25 x 30 cm. The Picasso Estate.

OPP.21:074; P.III:987; PP.21:048; Z.XXX:153





Cavalier et nus féminins sur la plage (Cheval débridé). Paris. 7-March/1921. Pencil. [25 x 32] 19,5 x 27 cm. Musée Picasso, Paris. Dation 1979.

OPP.21:181; Ba:228; MPP:3262; P.III:985; PP.21:051; Z.XXX:156; IC.05*:25

Chien-loup. Paris. [7-March]/1921. Charcoal & oil on canvas. 113 x 154 cm. Private collection.

OPP.21:266; PP.21:049; CP.95:112p; MM.85a*:8





Deux baigneurs. Paris. [10] 8-March/1921. Lead pencil on paper. [24 x 32] 24,5 x 30,5 cm. Nationalgalerie, Museum Berggruen, Staatlichen Museen zu Berlin. Formerly Sotheby's. #141, 04/04/90.

OPP.21:017; P.III:990; PP.21:053; Z.IV:263; AB.05b:24; BL.06*:119p; BR.96*:38; IC.05*:28; RK.94*:50

La lutte. Paris. 8-March/1921. Lithograph. 10,8 x 19,5 cm. The Museum of Modern Art, NYC. (Inv 41.1932). Gift of Mrs. Saidie A. May.

OPP.21:075; B.I:41; Ba:229.B; GC:10.2; P.III:988; FM.70:9; UW.88*:77





Sur la plage: deux nus (Quatre Lithographies). Paris. 8-March/1921. Lithograph. 10 x 22 cm. Musée Picasso, Paris. Dation 1979.

OPP.21:178; B.I:42; Ba:230; MPP:3264; FM.70:10; IC.05*:26; UW.88*:78

Sur la plage II (Trois nus) (Quatre Lithographies). Paris. 8-March/1921. Lithograph. 11 x 19 cm. The Museum of Modern Art, NYC. (Inv 40.1932). Gift of Mrs. Saidie A. May. Also Nationalgalerie, Berlin, Staatliche Museen zu Berlin-Kupferstichkabinett.

OPP.21:179; B.I:43; Ba:231.B; GC:10.4; P.III:984; FM.70:11; IC.05*:27; UW.88*:79





Sur la plage, II (Trois nus). Paris. 8-March/1921. Lithograph. 25,5 x 31 cm. Christie's. #23, L22005, 05/04/22. Formerly Pierre Le Guennec Collection, France..

OPP.21:344

Sur la plage, II (Trois nus). Paris. 8-March/1921. Lithograph. 25,5 x 31 cm. Christie's. #23, L22005, 05/04/22. Formerly Pierre Le Guennec Collection, France..

OPP.21:420





Les lutteurs. Paris. 8-March/1921. Lithograph. 10,8 x 19,5 cm. Musée Picasso, Paris. Dation 1979.

OPP.21:425; Ba:229; MPP:3263

Sur la plage II (Trois nus). Paris. 8-March/1921. Lithograph. 11 x 19 cm. Musée Picasso, Paris. Dation 1979.

OPP.21:427; Ba:231; MPP:3265





Sur la plage, II (Trois nus). Paris. 8-March/1921. Lithograph. 25,5 x 31 cm. Christie's. #23, L22005, 05/04/22. Formerly Pierre Le Guennec Collection, France..

OPP.21:431

Sur la plage, II (Trois nus). Paris. 8-March/1921. Lithograph. 25,5 x 31 cm. Christie's. #23, L22005, 05/04/22. Formerly Pierre Le Guennec Collection, France..

OPP.21:432





Sur la plage, II (Trois nus). Paris. 8-March/1921. Lithograph. 25,5 x 31 cm. Christie's. #23, L22005, 05/04/22. Formerly Pierre Le Guennec Collection, France..

OPP.21:433

Sur la plage, II (Trois nus). Paris. 8-March/1921. Lithograph. 25,5 x 31 cm. Christie's. #23, L22005, 05/04/22. Formerly Pierre Le Guennec Collection, France..

OPP.21:434





Sur la plage, II (Trois nus). Paris. 8-March/1921. Lithograph. 25,5 x 31 cm. Christie's. #23, L22005, 05/04/22. Formerly Pierre Le Guennec Collection, France..

OPP.21:435

Sur la plage, II (Trois nus). Paris. 8-March/1921. Lithograph. 25,5 x 31 cm. Christie's. #23, L22005, 05/04/22. Formerly Pierre Le Guennec Collection, France..

OPP.21:436





Sur la plage, II (Trois nus). Paris. 8-March/1921. Lithograph. 25,5 x 31 cm. Christie's. #23, L22005, 05/04/22. Formerly Pierre Le Guennec Collection, France..

OPP.21:437

Sur la plage, II (Trois nus). Paris. 8-March/1921. Lithograph. 25,5 x 31 cm. Christie's. #23, L22005, 05/04/22. Formerly Pierre Le Guennec Collection, France..

OPP.21:438





Sur la plage, II (Trois nus). Paris. 8-March/1921. Lithograph. 25,5 x 31 cm. Christie's. #23, L22005, 05/04/22. Formerly Pierre Le Guennec Collection, France..

OPP.21:439

Sur la plage, II (Trois nus). Paris. 8-March/1921. Lithograph. 25,5 x 31 cm. Christie's. #23, L22005, 05/04/22. Formerly Pierre Le Guennec Collection, France..

OPP.21:440





Deux baigneurs. Paris. 10-March/1921. Lead pencil on paper. 48 x 61 cm. Sotheby's. #33, N08125, 11/02/05. Formerly Sotheby's. #37, L09103, 06/28/99.

OPP.21:076; P.III:989; PP.21:052; Z.IV:262; NY.03a*:n/a; NY.45c*:n/a

Nature morte avec guitare et compotier. Paris. 11-March/1921. Pastel & pencil on paper. 32,1 x 25,1 cm. Sotheby's. #116, L19007, 06/20/19.

OPP.21:289





Trois nus féminins. Paris. 12-March/1921. Pastel on paper. 57,5 x 72 cm. Nichido Gallery, Tokyo.

OPP.21:073; P.III:986; PP.21:055; Z.IV:171

Trois femmes nues. Paris. 12-March/1921. Graphite on paper. 49 x 64 cm. Private collection.

OPP.21:386; PP.21:056; Z.XXX:158





Jeune femme assise. Paris. 15-March/1921. Graphite on paper. [26 x 20,4] 57,4 x 52,1 cm. James W. and Marilyn Alsdorf Collection, Chicago.

OPP.21:277; PP.21:057; Z.VI:1393; CH.68a*:84; PA.17b*:89

Mère et enfant au bord de la mer.

Fontainebleau. Spring/1921. Oil on canvas. 142,9 x 172,7 cm. The Art Institute of Chicago. (Inv. 1954.270). Gift of Maymar Corporation, Mrs. Maurice L. Rothschild, Mr. & Mrs. Chauncey McCormick; Mary & Leigh Block Fund; Ada Turnbull Hertle Endowment; through prior gift of Mr. & Mrs. Edwin E. Hokin.

OPP.21:013; P.III:1155; PP.21:194; Z.IV:311; AB.46:124p; AB.57*:57p; CG.93:97; CH.55b*:n/a; CH.68a*:25; DL.67*:31; DT.78:39; EC.02:385; EC.11:34p; GR.90:150p; HD.04:37p; HK.65:93p; IC.05:60p; JR.62*:4.18; KS.89:190; LP.99:98-99p; MF.06*:48; MG.80:124p; MS.00a:28p; NM.08:94p; NY.26c*:19; NY.26d*:n/a; PA.17b*:166; PA.22b*:n/a; PH.58*:100; SD.13a*:70; SD.13b:58p; TI.71:27; UP.00:499; UW.88:51a; WC.59*:78; WR.96:317p; WS.94:55p; WS.95a:245p; WW.91:275p





Guitare, bouteille et compotier. Paris. Spring/1921. [Watercolor] Oil on canvas. 100 x 90 cm. Sprengel Museum, Hannover.

OPP.21:014; P.III:1004; PP.21:116; Z.VI:1426; MI.53*:40; MJ.55*:51; MR.53:3; MS.24*:8; RR.76:60

Étude de mains. Paris. Spring/1921. Pastel on rough paper. 65,2 x 50 cm. Musée Picasso, Paris. Dation 1979.

OPP.21:032; MPP:907; P.III:1005; PP.21:124; JC.98*:183; PA.79a*:491; PD.06*:246p; PF.07*:n/a; TY.03*:n/a





Portrait d'Olga. Paris. [Winter] Spring/1921. [Tempera] gouache on cardboard. 31,5 x 19,5 cm. Private collection.

OPP.21:050; P.III:997; PP.21:026; Z.XXX:145; GL.84*:9

Femme assise (Olga Picasso). Paris. Spring/1921. Pencil on paper. [37 x 27] 36,7 x 26,7 cm. Sotheby's. #520, L16005, 02/05/16. Formerly Marina Picasso Collection.

OPP.21:051; P.III:998; JR.93*:52; NY.88d*:62





Portrait d'Olga. Paris. [Winter] Spring/1921. Pastel. 62,5 x 49 [68,5 x 63] cm. The Picasso Estate.

OPP.21:052; P.III:999; PP.21:027; Z.XXX:140

Cuadro Flamenco: étude de costume: ballerine espagnole. Paris. Spring/1921. Lead pencil & colored pencil on ochre paper. 32 x 25 cm. The Picasso Estate.

OPP.21:096; P.III:1026; PP.21:160; Z.XXX:155;
TO.96b*:137





Projet de décor pour Cuadro Flamenco. Paris. Spring/1921. Gouache on canvas. 23,5 x 34 cm. Musée Picasso, Paris. Dation 1979.

OPP.21:097; FM:956; MPP:1824; P.III:1028; PP.21:151; Z.IV:245; BH.06*:103p; DC.87:294; RI.03b:115p; RO.17*:152; TO.96b*:136; TY.03*:n/a; UP.00:488

Cuadro Flamenco: étude de costume. Paris. Spring/1921. Lead pencil, India ink & gouache on paper. 17 x 23,5 cm. The Picasso Estate.

OPP.21:098; P.III:1029; PP.21:152; Z.XXX:161; TO.96b*:140





Cuadro Flamenco: étude de costume. Paris. Spring/1921.
Gouache on paper. 23,5 x 17 cm. The Picasso Estate.

OPP.21:099; P.III:1031; PP.21:166; Z.XXX:167; TO.96b*:146

Cuadro Flamenco: étude de costume: le toréador.
Paris. Spring/1921. [Tempera] Gouache on paper. 23,5 x
17 cm. The Picasso Estate.

OPP.21:100; P.III:1032; PP.21:155; Z.XXX:162;
TO.96b*:141





Costumes: cape et gilets de toréador pour Cuadro Flamenco (Étude). Paris. Spring/1921. [Tempera] gouache on paper. 17 x 23,5 cm. The Picasso Estate.

OPP.21:101; P.III:1033; PP.21:154; Z.XXX:176; TO.96b*:156

Mains ensemble. Paris. Spring/1921. Oil on canvas. 16 x 18 cm. The Picasso Estate.

OPP.21:102; P.III:1034



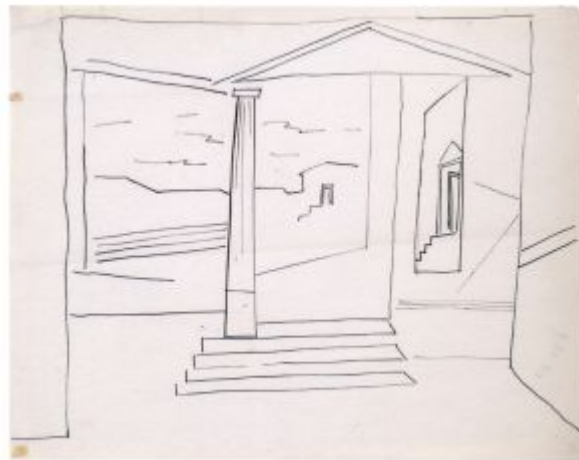


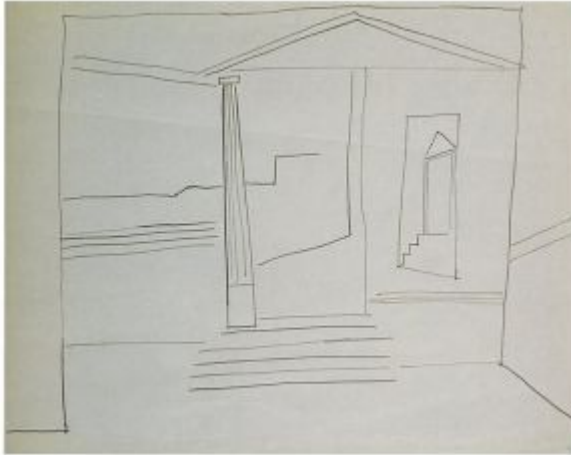
Main. Paris. Spring/1921. Oil on canvas. 14 x 24 cm. The Picasso Estate.

OPP.21:103; P.III:1035

Le décor d' Antigone (Étude). Paris. Spring/1921 [1922]. India ink on paper. 41 x 50 cm. Otilia Limited.

OPP.21:149; P.III:1140; PP.21:136; Z.XXX:183; BH.06*:205p; MA.22a*:89



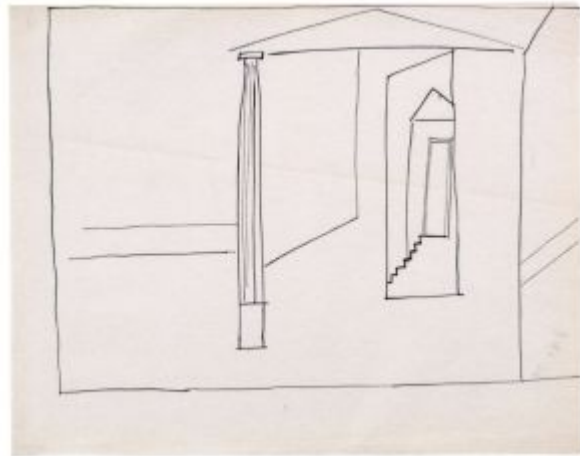


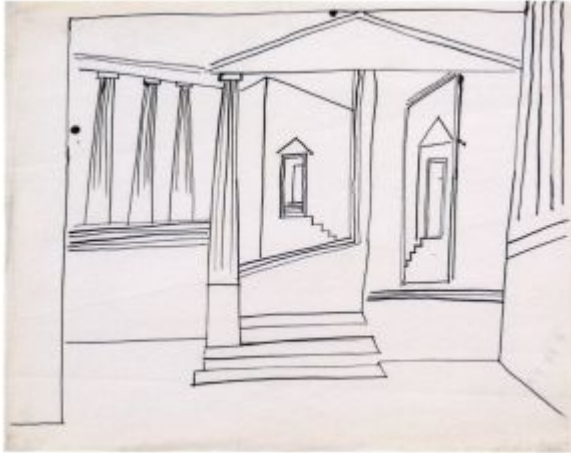
Le décor d' Antigone (Étude). Paris.
Spring/1921 [1922]. India ink on paper. 41 x 50
cm. The Picasso Estate.

OPP.21:150; P.III:1141; PP.21:135; Z.XXX:182;
BH.06*:205p

Le décor d' Antigone (Étude). Paris.
Spring/1921 [1922]. India ink on paper. 41
x 50 cm. Otilia Limited.

OPP.21:151; P.III:1142; PP.21:131;
Z.XXX:180; BH.06*:206p; MA.22a*:89





Le décor d' Antigone (Étude). Paris.
Spring/1921 [1922]. India ink on paper. 41 x 50
cm. Otilia Limited.

OPP.21:152; P.III:1143; PP.21:138; Z.XXX:186;
BH.06*:207p; MA.22a*:89; NM.08:65p

Le décor d' Antigone (Étude). Paris.
Spring/1921 [1922]. India ink on paper. 41
x 50 cm. Otilia Limited.

OPP.21:153; P.III:1144; PP.21:137;
Z.XXX:184; BH.06*:206p; MA.22a*:89





Journal, verre et paquet de tabac. Paris. [Fall] Spring/1921. Oil on canvas. 30 x 56,1 cm. Pola Museum of Art, Hakone, Kanagawa, Japan.

OPP.21:169; P.III:1132; PP.21:088; Z.XXX:216

Verre et paquet de tabac. Paris. [Spring]/1921. Lead pencil on paper. 8,5 x 13,5 cm. Musée Picasso, Paris. Sketchbook 1143. Jacqueline Roque Picasso Collection, Dation 1990.

OPP.21:211; MPP:1990.100.24r; P.III:1130; PP.21:093; Z.XXX:211; BL.96:23.24r; GG.86*:73; GR.90*:97





Deux mains croisées. Paris. Spring/1921. Pastel & gouache on paper. 48 x 62 cm. Musée Picasso, Paris. Dation 1979.

OPP.21:212; MPP:906; P.III:1006; PP.21:173; Z.XXX:239; LE.21*:345; PF.07*:n/a; TY.03*:n/a

Quatre baigneuses. Paris. Spring/1921. Oil on panel. 10 x 15,1 cm. Christie's. #1, 22010, 11/09/22. Formerly The Paul G. Allen Collection.

OPP.21:215; P.III:1017; PP.21:094; Z.IV:278; AB.39a*:153; AB.46:117; AB.57*:55p; JR.62*:4.14; TT.06*: 19p; UW.88:43a





Le décor d' Antigone (Étude). Paris.
[Spring]/1921. India ink on paper. 41 x 51 cm.
Otilia Limited.

OPP.21:216; P.III:1139; PP.21:134; Z.XXX:185;
BH.06*:204p; MA.22a*:89

Projet de décor. Paris. [Spring/1921].
Lead pencil & pastel on paper [OïC]. 21,7 x
27,3 cm. Private collection.

OPP.21:217; P.III:1020





Detail de décor: les fleurs (Cuadro Flamenco). Paris. Spring/1921. Tempera on canvas. 76 x 118 cm. Private collection. Formerly Collection Serge Lifar, Cannes.

OPP.21:219; P.III:1027; PP.21:150; Z.XXX:160; DC.87:295

Costume féminin de Cuadro Flamenco (Étude).

Paris. Spring/1921. Lead pencil & gouache on paper. 23,5 x 17 cm. The Picasso Estate.

OPP.21:220; P.III:1030; PP.21:164; Z.XXX:171; TO.96b*:150





Cuadro Flamenco: étude pour le décor. Paris. [Spring]/1921. Pastel on paper. 12,5 x 16 cm. Private collection.

OPP.21:234; P.III:1163; PP.21:140; Z.XXX:175; TO.96b*:154

Journal, verre et paquet de tabac (Étude). Paris. [Spring]/1921. Graphite pencil on paper. [9 x 13,5] 8,5 x 13 cm. Musée Picasso, Paris. Sketchbook 1143. Jacqueline Roque Picasso Collection, Dation 1990.

OPP.21:238; MPP:1990.100.22r; P.III:1131; PP.21:092; Z.XXX:212; BL.96:23.22r; GG.86*:73; GR.90*:97; JB.92:30p



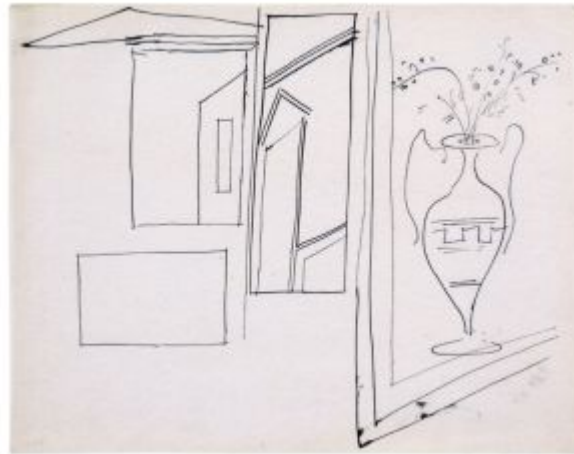


Deux études de danseurs et violoniste. Paris. [Spring]/1921. Lead pencil on paper. [9 x 13,5] 8,5 x 13 cm. Musée Picasso, Paris. Sketchbook 1143. Jacqueline Roque Picasso Collection, Dation 1990.

OPP.21:243; MPP:1990.100.12r; P.III:1157; PP.21:083; Z.XXX:195; BL.96:23.12r; GG.86*:73; GR.90*:97

Le décor d' Antigone (Étude). Paris. [Spring]/1921 [1922]. India ink on paper. 41 x 50 cm. Otilia Limited.

OPP.21:244; P.III:1138; PP.21:133; Z.XXX:178; MA.22a*:89





Mère et enfant. Paris. [Spring]/1921
[1921~1922]. Pencil on paper. 24,8 x 32,1 cm.
The Cleveland Museum of Art. (Inv 1949.527). Mr.
& Mrs. Lewis B. Williams Collection.

OPP.21:249; PP.21:193; Z.V:176; HK.65:92p;
UW.88*:51

**Feuille d'études pour Cuadro flamenco:
décor avec indications manuscrites.**

Paris. [1920~1921] [Spring]/1921. Lead
pencil on paper. 14,7 x 32 cm. Musée
Picasso, Paris. Dation 1979.

OPP.21:250; MPP:1820; PP.21:141;
Z.XXX:23; TO.96b*:132



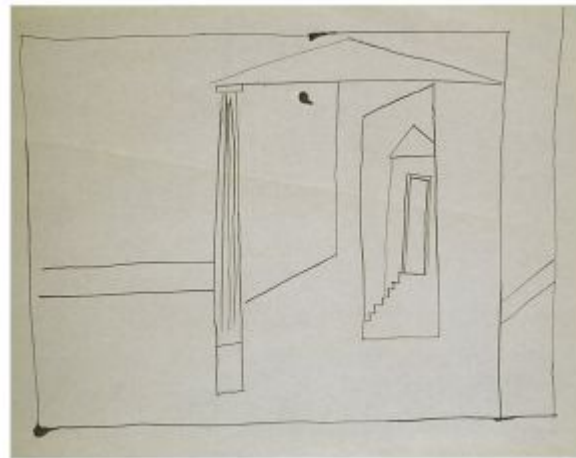


Cuadro Flamenco: détail de décor. Paris. [Spring]/1921. Oil on canvas. 187,5 x 143 cm. Kunstmuseum Bern. Shenkung Justin K. Thannhauser Foundation, 1973. Formerly Rosenberg & Helft, Ltd., London.

OPP.21:262; PP.21:147; Z.IV:248; AB.39a*:138; AB.46:109p; DC.87:301; FS.82:81p; JR.62*:4.8; KB.01*:70; SG.96:2.35

Le décor d' Antigone (Étude). Paris. [Spring]/1921. India ink on paper. 41 x 51 cm. Private collection.

OPP.21:298; PP.21:132; Z.XXX:181; BH.06*:206p



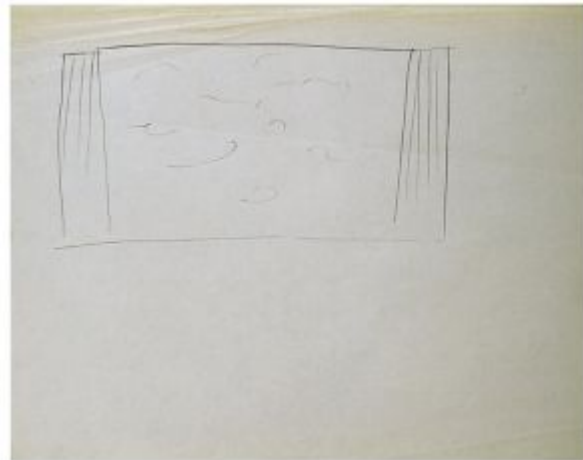


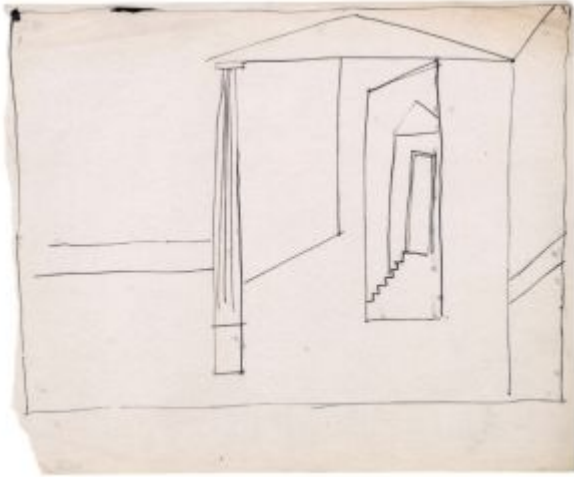
Le décor d' Antigone (Étude). Paris.
[Spring]/1921. India ink on paper. 41 x 51 cm.
Otilia Limited.

OPP.21:299; PP.21:129; Z.XXX:177;
BH.06*:205p; MA.22a*:89

Le décor d' Antigone (Étude). Paris.
[Spring]/1921. India ink on paper. 41 x 51
cm. Private collection.

OPP.21:300; BH.06*:205p





Le décor d' Antigone (Étude). Paris.
[Spring]/1921. India ink on paper. 41 x 51 cm.
Otilia Limited.

OPP.21:301; PP.21:130; Z.XXX:179;
BH.06*:206p; MA.22a*:89

Cuadro Flamenco: étude de costume. Paris.
[Spring]/1921. Watercolor. 23,5 x 17 cm. Private
collection.

OPP.21:302; PP.21:161; Z.XXX:163; TO.96b*:142





Cuadro Flamenco: étude de costume. Paris. [Spring]/1921.
Watercolor & pencil. 23,5 x 17 cm. Private collection.

OPP.21:303; PP.21:163; Z.XXX:164; TO.96b*:143

Cuadro Flamenco: étude de costume: un châle.
Paris. [Spring]/1921. Gouache. 23,5 x 17 cm. Private collection.

OPP.21:304; PP.21:156; Z.XXX:165; TO.96b*:144





Cuadro Flamenco: étude de costume. Paris. [Spring]/1921. [Gouache] Watercolor & pencil. 23,5 x 17 cm. Private collection.

OPP.21:305; PP.21:162; Z.XXX:166; TO.96b*:145

Cuadro Flamenco: étude de costume. Paris. [Spring]/1921. [Gouache] Watercolor. 23,5 x 17 cm. Private collection.

OPP.21:306; PP.21:165; Z.XXX:168; TO.96b*:147





Cuadro Flamenco: étude de costume: un châle. Paris. [Spring]/1921. Gouache & watercolor. 23,5 x 17 cm. Private collection.

OPP.21:307; PP.21:157; Z.XXX:169;
TO.96b*:148

Cuadro Flamenco: étude de costume: un châle. Paris. [Spring]/1921. Gouache & India ink. 23,5 x 17 cm. Private collection.

OPP.21:308; PP.21:159; Z.XXX:173;
TO.96b*:152





Cuadro Flamenco: étude de costume: un châle. Paris. [Spring]/1921. Gouache & watercolor. 23,5 x 17 cm. Private collection.

OPP.21:309; PP.21:158; Z.XXX:170; TO.96b*:149

Cuadro Flamenco: étude pour un costume. Paris. [Spring]/1921. Blue felt. 25 x 33 cm. Private collection.

OPP.21:310; PP.21:153; Z.XXX:172; TO.96b*:151





Homme allongé. Paris. [Spring]/1921. Black pencil on paper. 8,5 x 13,5 cm. Musée Picasso, Paris. Sketchbook 1143. Jacqueline Roque Picasso Collection, Dation 1990.

OPP.21:311; MPP:1990.100.49v; PP.21:119; Z.XXX:220; BL.96:23.49v; GG.86*:73; GR.90*:97; UW.88:42b

Couverture. Paris. [Spring]/1921. Mixed media. 8,5 x 13,5 cm. Musée Picasso, Paris. Sketchbook 1143. Jacqueline Roque Picasso Collection. Dation 1990.

OPP.21:313; MPP:1990.100.c1; BL.96:23.c1; GR.90*:97





Bouteille et compotier sur une table. Paris. [Spring]/1921.
Graphite & color pencils on paper. 8,5 x 13 cm. Musée Picasso,
Paris. Sketchbook 1143. Jacqueline Roque Picasso Collection. Dation
1990.

OPP.21:314; MPP:1990.100.08r; PP.21:075; Z.XXX:190;
BL.96:23.8r; GR.90*:97



Bouteille et compotier sur une table. Paris. [Spring]/1921.
Graphite & color pencils on paper. 8,5 x 13 cm. Musée
Picasso, Paris. Sketchbook 1143. Jacqueline Roque Picasso
Collection. Dation 1990.

OPP.21:315; MPP:1990.100.09r; PP.21:076; Z.XXX:191;
BL.96:23.9r; GR.90*:97



Bouteille et compotier sur une table. Paris. [Spring]/1921.
Graphite & color pencils on paper. 8,5 x 13 cm. Musée Picasso,
Paris. Sketchbook 1143. Jacqueline Roque Picasso Collection. Dation
1990.

OPP.21:316; MPP:1990.100.10r; PP.21:077; Z.XXX:192;
BL.96:23.10r; GR.90*:97



Bouteille et compotier sur une table. Paris. [Spring]/1921.
Graphite & color pencils on paper. 8,5 x 13 cm. Musée
Picasso, Paris. Sketchbook 1143. Jacqueline Roque Picasso
Collection. Dation 1990.

OPP.21:317; MPP:1990.100.11r; PP.21:078; Z.XXX:193;
BL.96:23.11r; GR.90*:97



Main tenant un poisson. Paris. [Spring]/1921. Graphite pencil on paper. 8,5 x 13 cm. Musée Picasso, Paris. Sketchbook 1143. Jacqueline Roque Picasso Collection. Dation 1990.

OPP.21:318; MPP:1990.100.17r; PP.21:082; Z.XXX:196; BL.96:23.17r; GR.90*:97

Danseurs et violoniste (à l'envers). Paris. [Spring]/1921. Graphite on paper. 8,5 x 13 cm. Musée Picasso, Paris. Sketchbook 1143. Jacqueline Roque Picasso Collection. Dation 1990.

OPP.21:320; MPP:1990.100.19r; PP.21:084; Z.XXX:198; BL.96:23.19r; GR.90*:97





Femme au chapeau accoudée sur un fauteuil. Paris.
[Spring]/1921. Graphite pencil on paper. 8,5 x 13 cm. Musée
Picasso, Paris. Sketchbook 1143. Jacqueline Roque Picasso
Collection. Dation 1990.

OPP.21:321; MPP:1990.100.26r; PP.21:097; Z.XXX:224;
BL.96:23.26r; GR.90*:97

Homme dans une baignoire. Paris.
[Spring]/1921. Graphite on paper. 8,5 x 13
cm. Musée Picasso, Paris. Sketchbook
1143. Jacqueline Roque Picasso Collection.
Dation 1990.

OPP.21:322; MPP:1990.100.46r;
PP.21:115; Z.XXX:214; BL.96:23.46r;
GR.90*:97





Bouteille et compotier sur une table. Paris. [Spring]/1921.
Graphite on paper. 8,5 x 13 cm. Musée Picasso, Paris. Sketchbook
1143. Jacqueline Roque Picasso Collection. Dation 1990.

OPP.21:323; MPP:1990.100.39r; PP.21:109; Z.XXX:218;
BL.96:23.39r; GR.90*:97

Main. Feuille de carnet. Paris.
[Spring]/1921. Graphite on paper. [9 x
13,5] 8,5 x 13 cm. Musée Picasso, Paris.
Sketchbook 1143. Jacqueline Roque
Picasso Collection, Dation 1990.

OPP.21:328; MPP:1990.100.51v;
PP.21:087; Z.XXX:232; BL.96:23.51v



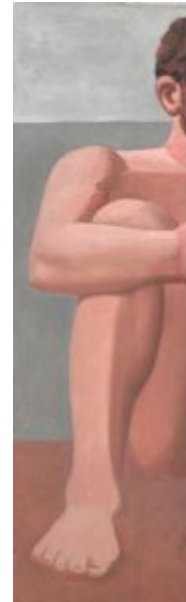


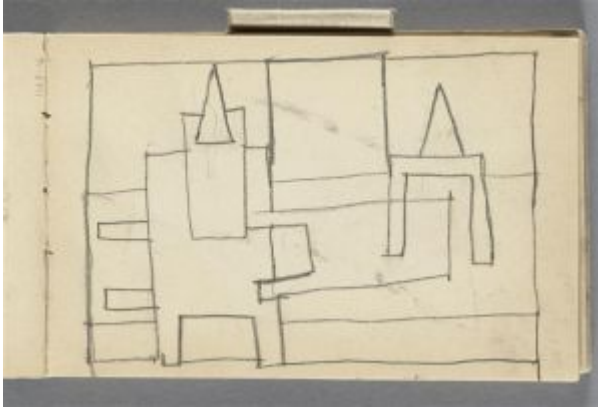
Le peintre face au chevalet dans l'atelier de la rue La Boétie. Paris. [Spring]/1921. Graphite, gouache & watercolor. 13,3 x 8,5 cm. Musée Picasso, Paris. Jacqueline Roque Picasso Collection, Dation 1990.

OPP.21:329; MPP:1990.100.03r; BL.96:23.3r

Mère et enfant au bord de la mer (Fragment). Fontainebleau. Spring/1921. Oil on canvas. 143,4 x 44,3 cm. The Art Institute of Chicago. (Inv 1968.100). Gift of Pablo Picasso, 1968.

OPP.21:351; WR.96*:334p



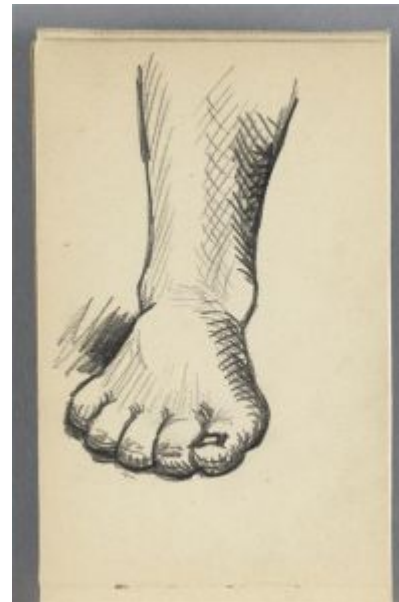


Composition. Feuille de carnet. Paris. [Spring]/1921. Graphite on paper. 9 x 13,5 cm. Musée Picasso, Paris. Sketchbook 1143. Jacqueline Roque Picasso Collection, Dation 1990.

OPP.21:389; MPP:1990.100.18r; PP.21:067; Z.XXX:187; BL.96:23.18r

Pied. Feuille de carnet. Paris. [Spring]/1921. Graphite on paper. 13,5 x 9 cm. Musée Picasso, Paris. Sketchbook 1143. Jacqueline Roque Picasso Collection, Dation 1990.

OPP.21:390; MPP:1990.100.04v; PP.21:068; Z.XXX:189; BL.96:23.4v





Main. Le poing fermé. Feuille de carnet. Paris. [Spring]/1921. Graphite on paper. 9 x 13,5 cm. Musée Picasso, Paris. Sketchbook 1143. Jacqueline Roque Picasso Collection, Dation 1990.

OPP.21:391; MPP:1990.100.36r; PP.21:069; Z.XXX:194; BL.96:23.36r

Main, les doigts pliés. Feuille de carnet. Paris. [Spring]/1921. Graphite on paper. 13,5 x 9 cm. Musée Picasso, Paris. Sketchbook 1143. Jacqueline Roque Picasso Collection, Dation 1990.

OPP.21:392; MPP:1990.100.17v; PP.21:079; Z.XXX:197; BL.96:23.17v





Mains pinçant une corde de guitare. Feuille de carnet. Paris. [Spring]/1921. Graphite on paper. 9 x 13,5 cm. Musée Picasso, Paris. Sketchbook 1143. Jacqueline Roque Picasso Collection, Dation 1990.

OPP.21:393; MPP:1990.100.20v; PP.21:080; Z.XXX:199; BL.96:23.20v

Mains jouant de la guitare. Feuille de carnet. Paris. [Spring]/1921. Graphite on paper. 9 x 13,5 cm. Musée Picasso, Paris. Sketchbook 1143. Jacqueline Roque Picasso Collection, Dation 1990.

OPP.21:394; MPP:1990.100.20r; PP.21:081; Z.XXX:200; BL.96:23.20r





Couple de danseurs. Double feuille de carnet. Paris. [Spring]/1921. Graphite on paper. 27 x 9 cm. Musée Picasso, Paris. Sketchbook 1143. Jacqueline Roque Picasso Collection, Dation 1990.

OPP.21:395; MPP:1990.100.28v/29r; PP.21:085; Z.XXX:201; BL.96:23.28v

Le violoniste. Feuille de carnet. Paris. [Spring]/1921. Graphite on paper. 13,5 x 9 cm. Musée Picasso, Paris. Sketchbook 1143. Jacqueline Roque Picasso Collection, Dation 1990.

OPP.21:396; MPP:1990.100.19v; PP.21:086; Z.XXX:202; BL.96:23.19v





Homme nu debout. Feuille de carnet. Paris. [Spring]/1921.
Graphite on paper. 13,5 x 9 cm. Musée Picasso, Paris. Sketchbook
1143. Jacqueline Roque Picasso Collection, Dation 1990.

OPP.21:397; MPP:1990.100.23r; PP.21:102; Z.XXX:203;
BL.96:23.23r

Tête d'acteur. Feuille de carnet. Paris. [Spring]/1921.
Graphite on paper. 13,5 x 9 cm. Musée Picasso, Paris.
Sketchbook 1143. Jacqueline Roque Picasso Collection, Dation
1990.

OPP.21:398; MPP:1990.100.34v; PP.21:072; Z.XXX:204;
BL.96:23.34v





Main de bébé (Paul). Feuille de carnet. Paris. [Spring]/1921. Graphite on paper. 9 x 13,5 cm. Musée Picasso, Paris. Sketchbook 1143. Jacqueline Roque Picasso Collection, Dation 1990.

OPP.21:399; MPP:1990.100.42r; PP.21:098; Z.XXX:205; BL.96:23.42r

Main de bébé (Paul). Feuille de carnet. Paris. [Spring]/1921. Graphite on paper. 9 x 13,5 cm. Musée Picasso, Paris. Sketchbook 1143. Jacqueline Roque Picasso Collection, Dation 1990.

OPP.21:400; MPP:1990.100.41r; PP.21:099; Z.XXX:206; BL.96:23.41r





Main jouant de la guitare. Feuille de carnet. Paris. [Spring]/1921. Graphite on paper. 9 x 13,5 cm. Musée Picasso, Paris. Sketchbook 1143. Jacqueline Roque Picasso Collection, Dation 1990.

OPP.21:401; MPP:1990.100.21r; PP.21:071; Z.XXX:207; BL.96:23.21r

Main. Feuille de carnet. Paris. [Spring]/1921. Graphite on paper. 9 x 13,5 cm. Musée Picasso, Paris. Sketchbook 1143. Jacqueline Roque Picasso Collection, Dation 1990.

OPP.21:402; MPP:1990.100.43v; PP.21:070; Z.XXX:208; BL.96:23.43v





Main de bébé (Paul). Feuille de carnet. Paris. [Spring]/1921. Graphite on paper. 9 x 13,5 cm. Musée Picasso, Paris. Sketchbook 1143. Jacqueline Roque Picasso Collection, Dation 1990.

OPP.21:403; MPP:1990.100.43r; PP.21:100; Z.XXX:209; BL.96:23.43r

Nature morte sur une table ronde. Feuille de carnet. Paris. [Spring]/1921. Graphite on paper. 9 x 13,5 cm. Musée Picasso, Paris. Sketchbook 1143. Jacqueline Roque Picasso Collection, Dation 1990.

OPP.21:404; MPP:1990.100.38r; PP.21:074; Z.XXX:210; BL.96:23.38r





Homme allongé. Feuille de carnet. Paris. [Spring]/1921. Graphite on paper. 9 x 13,5 cm. Musée Picasso, Paris. Sketchbook 1143. Jacqueline Roque Picasso Collection, Dation 1990.

OPP.21:405; MPP:1990.100.45v; PP.21:112; Z.XXX:213; BL.96:23.45v

Bouteille et compotier sur une table. Feuille de carnet. Paris. [Spring]/1921. Graphite on paper. 13,5 x 9 cm. Musée Picasso, Paris. Sketchbook 1143. Jacqueline Roque Picasso Collection, Dation 1990.

OPP.21:407; MPP:1990.100.40r; PP.21:108; Z.XXX:217; BL.96:23.40r





Jambe pliée. Feuille de carnet. Paris. [Spring]/1921. Graphite on paper. 13,5 x 9 cm. Musée Picasso, Paris. Sketchbook 1143. Jacqueline Roque Picasso Collection, Dation 1990.

OPP.21:408; MPP:1990.100.45r; PP.21:106; Z.XXX:219; BL.96:23.45r

Nu assis. Paris. [Spring]/1921. Graphite on paper. 16 x 12 cm. Private collection.

OPP.21:409; PP.21:127; Z.XXX:223





Homme à mi-corps près d'une baignoire.
Feuille de carnet. Paris. [Spring]/1921. Graphite on paper. 9 x 13,5 cm. Musée Picasso, Paris. Sketchbook 1143. Jacqueline Roque Picasso Collection, Dation 1990.

OPP.21:410; MPP:1990.100.50r; PP.21:120;
Z.XXX:226; BL.96:23.50r

Jambes. **Feuille de carnet.** Paris. [Spring]/1921. Graphite on paper. 13,5 x 9 cm. Musée Picasso, Paris. Sketchbook 1143. Jacqueline Roque Picasso Collection, Dation 1990.

OPP.21:411; MPP:1990.100.47v; PP.21:105; Z.XXX:227;
BL.96:23.47v





Homme à mi-corps debout. Feuille de carnet. Paris.
[Spring]/1921. Graphite on paper. 13,5 x 9 cm. Musée Picasso, Paris.
Sketchbook 1143. Jacqueline Roque Picasso Collection, Dation 1990.

OPP.21:412; MPP:1990.100.48v; PP.21:103; Z.XXX:228;
BL.96:23.48v

Homme à mi-corps debout. Feuille de carnet. Paris.
[Spring]/1921. Graphite on paper. 13,5 x 9 cm. Musée
Picasso, Paris. Sketchbook 1143. Jacqueline Roque
Picasso Collection, Dation 1990.

OPP.21:413; MPP:1990.100.53r; PP.21:104; Z.XXX:229;
BL.96:23.53r





Jambe. Feuille de carnet. Paris. [Spring]/1921. Graphite on paper. 9 x 13,5 cm. Musée Picasso, Paris. Sketchbook 1143. Jacqueline Roque Picasso Collection, Dation 1990.

OPP.21:414; MPP:1990.100.48r; PP.21:107; Z.XXX:230; BL.96:23.48r

Bras et torse. Feuille de carnet. Paris. [Spring]/1921. Graphite on paper. 9 x 13,5 cm. Musée Picasso, Paris. Sketchbook 1143. Jacqueline Roque Picasso Collection, Dation 1990.

OPP.21:415; MPP:1990.100.51r; PP.21:110; Z.XXX:231; BL.96:23.51r





Compotier avec fruits. Paris. [Spring]/1921. Graphite on paper. 28 x 47,5 cm. Private collection.

OPP.21:416; PP.21:121; Z.IV:257

Torse d'homme. Feuille de carnet.
Paris. [Spring]/1921. Graphite on paper. 9 x 13,5 cm. Musée Picasso, Paris. Sketchbook 1143. Jacqueline Roque Picasso Collection, Dation 1990.

OPP.21:417; MPP:1990.100.52v;
PP.21:111; Z.XXX:233; BL.96:23.52v





Nu debout de dos. Paris. [Spring]/1921. Graphite on paper.
11 x 9 cm. Private collection.

OPP.21:419; PP.21:185; Z.XXX:237

Trois baigneurs. Paris. [Spring]/1921.
Watercolor over printed invitation card
[OIC]. 10 x 13,5 cm. Private collection.
Formerly Sotheby's. #160, 06/28/95.

OPP.21:442; PP.21:171a





Portrait de Maria Dalbaicin. Paris. [Spring]/1921. Pencil on the inside cover of a menu. 32 x 22 cm. Private collection. Formerly Sotheby's. #182A, 11/16/89.

OPP.21:443; PP.21:171b

Silhouette de Mlle Irène Béliankine. Paris. [Spring]/1921. Pencil on paper. S/U. Private collection.

OPP.21:444; PP.21:168; DC.87:290





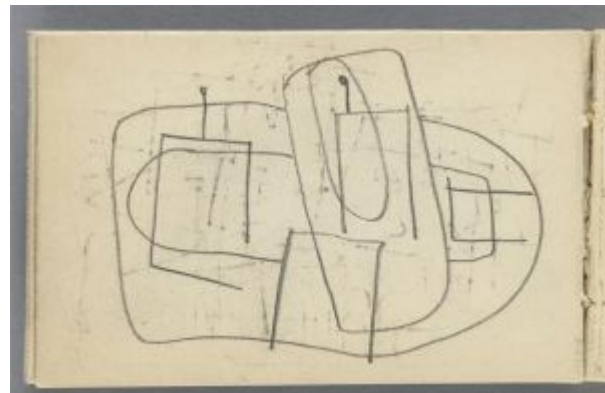
Étude d'homme nu assis dans un fauteuil.

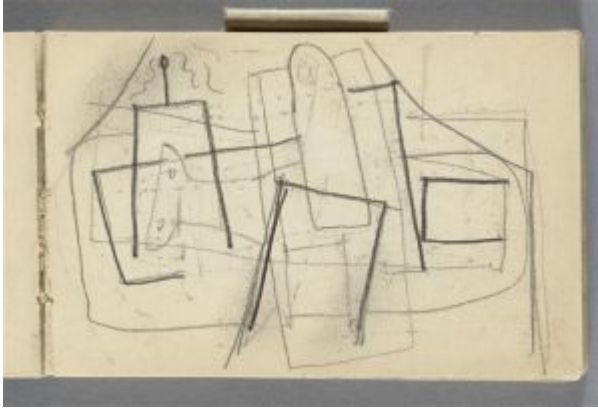
[Paris]. [Spring]/1921. Pencil on Ingres paper.
13,3 x 8,5 cm. Musée Picasso, Paris. Sketchbook
1143. Jacqueline Roque Picasso Collection, Dation
1990.

OPP.21:447; MPP:1990.100.05v; BL.96:23.5v

Esquisse de nature morte. Paris.
[Spring]/1921. Graphite on Ingres paper.
13,3 x 8,5 cm. Musée Picasso, Paris.
Jacqueline Roque Picasso Collection, Dation
1990.

OPP.21:449; MPP:1990.100.06v;
BL.96:23.6v





Esquisse de nature morte devant la fenêtre ouverte. Paris. [Spring]/1921. Graphite on Ingres paper. 13,3 x 8,5 cm. Musée Picasso, Paris. Jacqueline Roque Picasso Collection, Dation 1990.

OPP.21:450; MPP:1990.100.07r; BL.96:23.7r

Étude de mains croisées. Paris. [Spring]/1921. Graphite on Ingres paper. 13,3 x 8,5 cm. Musée Picasso, Paris. Jacqueline Roque Picasso Collection, Dation 1990.

OPP.21:451; MPP:1990.100.12v; BL.96:23.12v





Caricature. Paris. [Spring]/1921. Graphite on Ingres paper. 13,3 x 8,5 cm. Musée Picasso, Paris. Jacqueline Roque Picasso Collection, Dation 1990.

OPP.21:452; MPP:1990.100.13r; BL.96:23.13r

Deux études de mains. Paris. [Spring]/1921. Graphite on Ingres paper. 13,3 x 8,5 cm. Musée Picasso, Paris. Jacqueline Roque Picasso Collection, Dation 1990.

OPP.21:453; MPP:1990.100.14r; BL.96:23.14r





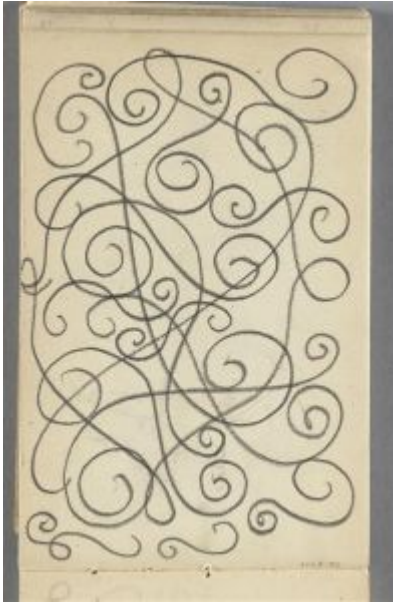
Main. Paris. [Spring]/1921. Graphite on Ingres paper. 13,3 x 8,5 cm. Musée Picasso, Paris. Jacqueline Roque Picasso Collection, Dation 1990.

OPP.21:454; MPP:1990.100.15r; BL.96:23.15r

Main. Paris. [Spring]/1921. Graphite on Ingres paper. 13,3 x 8,5 cm. Musée Picasso, Paris. Jacqueline Roque Picasso Collection, Dation 1990.

OPP.21:455; MPP:1990.100.25r; BL.96:23.25r





Motifs décoratifs. Paris. [Spring]/1921. Graphite on Ingres paper. 13,3 x 8,5 cm. Musée Picasso, Paris. Jacqueline Roque Picasso Collection, Dation 1990.

OPP.21:456; MPP:1990.100.26v; BL.96:23.26v

Esquisse de tête de femme au chapeau. Paris. [Spring]/1921. Graphite on Ingres paper. 13,3 x 8,5 cm. Musée Picasso, Paris. Jacqueline Roque Picasso Collection, Dation 1990.

OPP.21:457; MPP:1990.100.27r; BL.96:23.27r





Trois baigneurs. Paris. [Spring]/1921. Graphite on Ingres paper. 13,3 x 8,5 cm. Musée Picasso, Paris. Jacqueline Roque Picasso Collection, Dation 1990.

OPP.21:458; MPP:1990.100.28r; BL.96:23.28r

Esquisse du couple de danseurs. Paris. [Spring]/1921. Graphite on Ingres paper. 13,3 x 8,5 cm. Musée Picasso, Paris. Jacqueline Roque Picasso Collection, Dation 1990.

OPP.21:459; MPP:1990.100.29v; BL.96:23.29v





Main. Paris. [Spring]/1921. Graphite on Ingres paper. 13,3 x 8,5 cm. Musée Picasso, Paris. Jacqueline Roque Picasso Collection, Dation 1990.

OPP.21:460; MPP:1990.100.30r; BL.96:23.30r

Études de bras et de mains. Paris. [Spring]/1921. Graphite on Ingres paper. 13,3 x 8,5 cm. Musée Picasso, Paris. Jacqueline Roque Picasso Collection, Dation 1990.

OPP.21:461; MPP:1990.100.30v; BL.96:23.30v





2ème de couverture. Paris. [Spring]/1921. Graphite on Ingres paper. 13,3 x 8,5 cm. Musée Picasso, Paris. Jacqueline Roque Picasso Collection, Dation 1990.

OPP.21:462; MPP:1990.100.c2; BL.96:23.c2

Esquisse pour une composition avec des baigneurs. Paris. [Spring]/1921. Graphite on Ingres paper. 13,3 x 8,5 cm. Musée Picasso, Paris. Jacqueline Roque Picasso Collection, Dation 1990.

OPP.21:463; MPP:1990.100.31r; BL.96:23.31r





Deux baigneurs. Paris. [Spring]/1921. Graphite on Ingres paper. 13,3 x 8,5 cm. Musée Picasso, Paris. Jacqueline Roque Picasso Collection, Dation 1990.

OPP.21:464; MPP:1990.100.31v; BL.96:23.31v

Couple de danseurs. Paris. [Spring]/1921. Graphite on Ingres paper. 13,3 x 8,5 cm. Musée Picasso, Paris. Jacqueline Roque Picasso Collection, Dation 1990.

OPP.21:465; MPP:1990.100.32r; BL.96:23.32r





Esquisse du couple de danseurs. Paris. [Spring]/1921. Graphite on Ingres paper. 13,3 x 8,5 cm. Musée Picasso, Paris. Jacqueline Roque Picasso Collection, Dation 1990.

OPP.21:466; MPP:1990.100.32v; BL.96:23.32v

Étude raturée. Paris. [Spring]/1921. Graphite on Ingres paper. 13,3 x 8,5 cm. Musée Picasso, Paris. Jacqueline Roque Picasso Collection, Dation 1990.

OPP.21:467; MPP:1990.100.33r; BL.96:23.33r





Nu assis. Paris. [Spring]/1921. Graphite on Ingres paper. 13,3 x 8,5 cm. Musée Picasso, Paris. Jacqueline Roque Picasso Collection, Dation 1990.

OPP.21:468; MPP:1990.100.33v; BL.96:23.33v

Esquisse de nature morte raturée. Paris. [Spring]/1921. Graphite on Ingres paper. 13,3 x 8,5 cm. Musée Picasso, Paris. Jacqueline Roque Picasso Collection, Dation 1990.

OPP.21:469; MPP:1990.100.34r; BL.96:23.34r





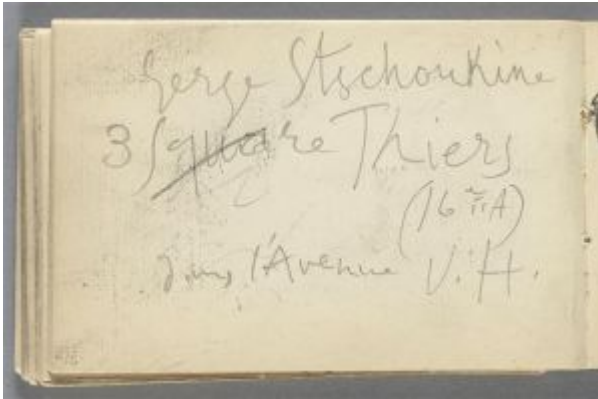
Bras tendu. Paris. [Spring]/1921. Graphite on Ingres paper. 13,3 x 8,5 cm. Musée Picasso, Paris. Jacqueline Roque Picasso Collection, Dation 1990.

OPP.21:470; MPP:1990.100.36v; BL.96:23.36v

Détail de façade: projet de décor pour Cuadro Flamenco (à l'envers). Paris. [Spring]/1921. Graphite on Ingres paper. 13,3 x 8,5 cm. Musée Picasso, Paris. Jacqueline Roque Picasso Collection, Dation 1990.

OPP.21:471; MPP:1990.100.37r; BL.96:23.37r



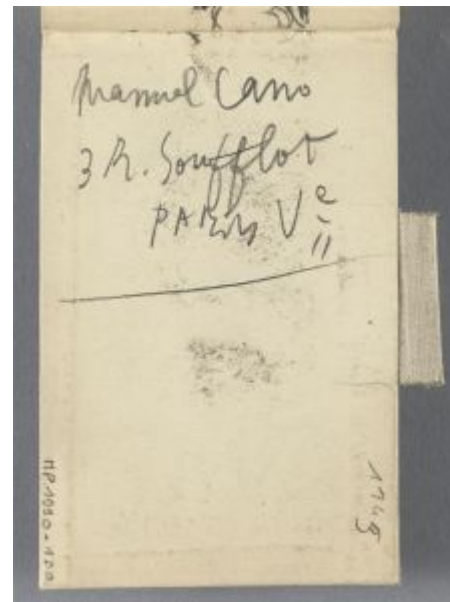


Inscription. Paris. [Spring]/1921. Ink on paper. 13,3 x 8,5 cm. Musée Picasso, Paris. Jacqueline Roque Picasso Collection, Dation 1990.

OPP.21:472; MPP:1990.100.38v; BL.96:23.38v

3ème de couverture. Paris. [Spring]/1921. Graphite on Ingres paper. 13,3 x 8,5 cm. Musée Picasso, Paris. Jacqueline Roque Picasso Collection, Dation 1990.

OPP.21:473; MPP:1990.100.c3; BL.96:23.c3





Oreilles. Paris. [Spring]/1921. Graphite on Ingres paper. 13,3 x 8,5 cm. Musée Picasso, Paris. Jacqueline Roque Picasso Collection, Dation 1990.

OPP.21:474; MPP:1990.100.44v; BL.96:23.44v

Deux hommes autour d'une baignoire.
Paris. [Spring]/1921. Graphite on Ingres
paper. 13,3 x 8,5 cm. Musée Picasso, Paris.
Jacqueline Roque Picasso Collection, Dation
1990.

OPP.21:475; MPP:1990.100.50v;
BL.96:23.50v





4ème de couverture. Paris. [Spring]/1921.
Mixed media. 13,3 x 8,5 cm. Musée Picasso, Paris.
Jacqueline Roque Picasso Collection, Dation 1990.

OPP.21:476; MPP:1990.100.c4; BL.96:23.c4

Étude avec trois personnages. Paris. [Spring]/1921.
Graphite on Ingres paper. 13,3 x 8,5 cm. Musée Picasso,
Paris. Jacqueline Roque Picasso Collection, Dation 1990.

OPP.21:477; MPP:1990.100.44r; BL.96:23.44r



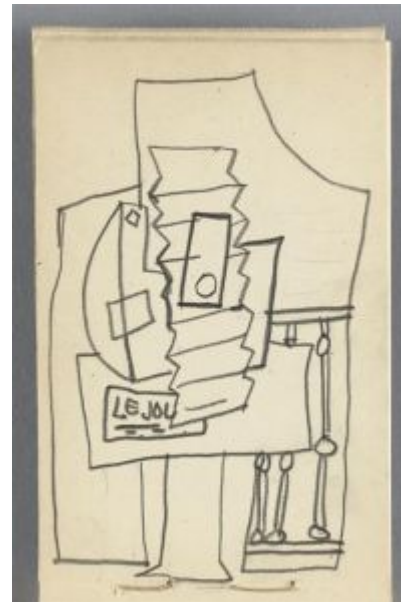


Étude de jambes (à l'envers). Paris. [Spring]/1921. Graphite on Ingres paper. 13,3 x 8,5 cm. Musée Picasso, Paris. Jacqueline Roque Picasso Collection, Dation 1990.

OPP.21:478; MPP:1990.100.53v; BL.96:23.53v

Composition. [Paris]. [Spring]/1921. Gouache. 27 x 21 cm. Musée Picasso, Paris. Sketchbook 1143. Jacqueline Roque Picasso Collection, Dation 1990.

OPP.21:479; MPP:1990.100.03v; PP.21:073; Z.XXX:188; BL.96:23.3v





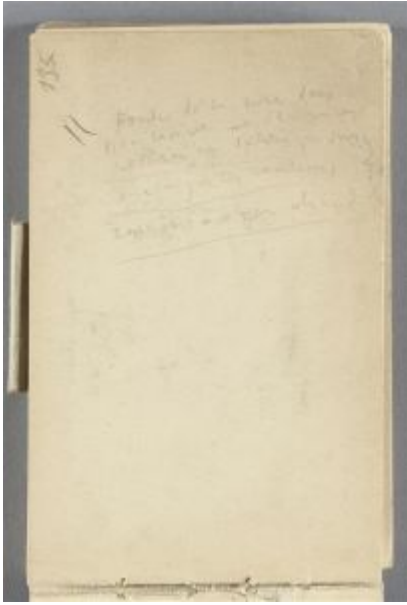
Homme dans une baignoire. Paris.
[Spring/1921]. Lead pencil on paper. 8,5 x 13,5
cm. Musée Picasso, Paris. Sketchbook 1143.
Jacqueline Roque Picasso Collection, Dation 1990.

OPP.21:480; MPP:1990.100.46v; PP.21:113;
Z.XXX:221; BL.96:23.46v; GG.86*:73;
GR.90*:97; JB.92:31p

Homme dans une baignoire. Paris.
[Spring/1921]. Lead pencil on paper. 8,5 x
13,5 cm. Musée Picasso, Paris. Sketchbook
1143. Jacqueline Roque Picasso Collection,
Dation 1990.

OPP.21:481; MPP:1990.100.47r;
PP.21:114; Z.XXX:225; BL.96:23.47r;
GG.86*:73; GR.90*:97; JB.92:31p



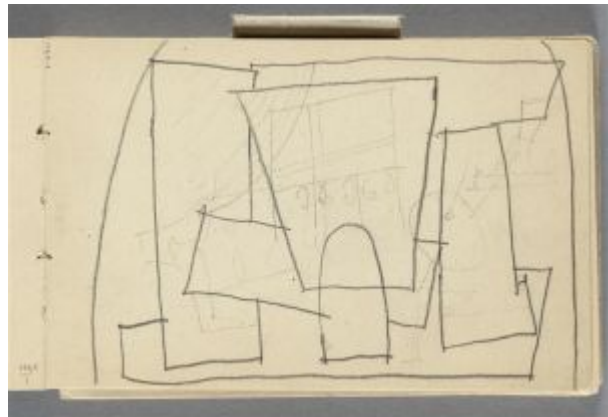


Inscription. Paris. [Spring]/1921. Graphite on Ingres paper. 13,3 x 8,5 cm. Musée Picasso, Paris. Jacqueline Roque Picasso Collection, Dation 1990.

OPP.21:482; MPP:1990.100.01r; BL.96:23.1r

Esquisse pour une nature morte devant la fenêtre ouverte dans l'atelier de la rue La Boétie. Paris. [Spring]/1921. Graphite on Ingres paper. 13,3 x 8,5 cm. Musée Picasso, Paris. Jacqueline Roque Picasso Collection, Dation 1990.

OPP.21:483; MPP:1990.100.02r; BL.96:23.2r





Nature morte devant la fenêtre ouverte dans l'atelier de la rue La Boétie. Paris.

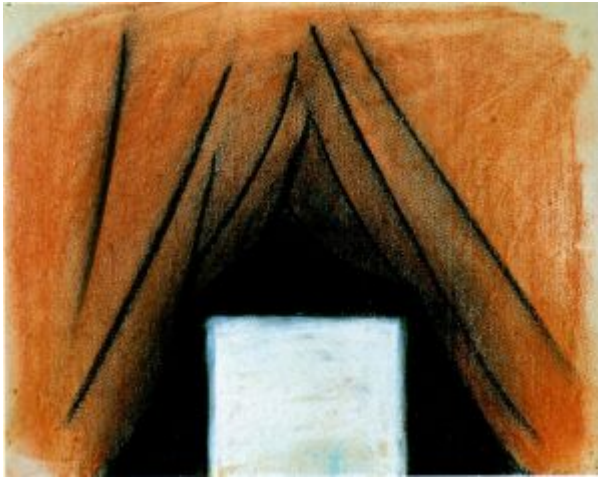
[Spring]/1921. Graphite on Ingres paper. 13,3 x 8,5 cm. Musée Picasso, Paris. Jacqueline Roque Picasso Collection, Dation 1990.

OPP.21:484; MPP:1990.100.02v; BL.96:23.2v

Nature morte, guitare et compotier devant la fenêtre ouverte dans l'atelier de la rue La Boétie. Paris. [Spring]/1921. Graphite on Ingres paper. 13,3 x 8,5 cm. Musée Picasso, Paris. Jacqueline Roque Picasso Collection, Dation 1990.

OPP.21:448; MPP:1990.100.06r; BL.96:23.6r





Cuadro Flamenco: étude pour le décor. Paris. Spring~Summer/1921. Charcoal & pastel on paper. 21,5 x 27 cm. The Picasso Estate.

OPP.21:092; P.III:1022; PP.21:139; Z.XXX:174; TO.96b*:153

Portrait de Boris Kochno. Paris. Spring~Summer/1921. Lead pencil on paper. 32 x 22 cm. Bibliothèque Musée de l'Opéra, Paris. (Inv 84). Kochno Collection.

OPP.21:093; P.III:1023; PP.21:167; DC.87:284; TO.96b*:158





Cuadro Flamenco: étude pour le décor. Paris. Spring~Summer/1921. Watercolor on paper. 23,5 x 34 cm. The Picasso Estate.

OPP.21:094; P.III:1024; TO.96b*:155

Le décor de Cuadro Flamenco: spectateurs dans une loge (Étude). Paris. Spring~Summer/1921. Lead pencil on paper. 26,5 x 20 cm. Musée Picasso, Paris. Dation 1979.

OPP.21:095; MPP:1822; P.III:1025; PP.21:145; Z.IV:247; DC.87:299; GP.96:135p; MS.01*:n/a; TO.96b*:134; TY.03*:n/a





Femme nue debout accoudée. Fontainebleau. Spring~Summer/1921. Oil on canvas. 20,5 x 9,5 cm. The Picasso Estate.

OPP.21:112; P.III:1049

Trois femmes à la fontaine. Fontainebleau. Spring~Summer/1921. Charcoal & pencil on paper. 130 x 97 cm. The Picasso Estate.

OPP.21:113; P.III:1050; PP.21:256; Z.XXX:249





Maternité. Fontainebleau. Spring~Summer/1921. Oil on canvas. 65,5 x 46,5 cm. Mr. and Mrs. Harry N. Abrams Collection, NY.

OPP.21:185; P.III:1041; PP.21:199; Z.IV:300; HK.65:92p; JR.62*:4.15; RE.85:149p; RE.96:149p; TI.71:23; WS.94:53p; WS.95a*:60

Le portail. Fontainebleau. Spring~Summer/1921. Oil on canvas [Reverse of *Guitare sur table*]. 99 x 97 cm. Helly Nahmad Collection, Monaco/London. Formerly Sotheby's. #74, 05/16/90.

OPP.21:221; P.III:1037; PP.21:202; Z.IV:282





Mère et enfant. Fontainebleau. [Spring~] Summer/1921. Oil on canvas [OIC]. 27 x 22 [21] cm. Private collection.

OPP.21:222; P.III:1039; PP.21:196; Z.IV:266; UW.88:36a

Maternité. Fontainebleau. [Spring~] Summer/1921. Oil on canvas. 55,9 x 47 cm. Christie's. #56, 2352, 11/03/10.

OPP.21:223; P.III:1040; PP.21:198; Z.IV:299; JR.66c*:26





Course de taureaux. Paris. [Spring] March 23/1921. Pencil. 21 x 27,3 cm. Private collection.

OPP.21:312; PP.21:059; Z.IV:255; UW.88:46a

Taureau et cheval. Paris. 23~27-March/1921. Pencil. 28 x 37,5 cm. Marina Picasso Collection. (Inv 3142). Courtesy Galerie Jan Krugier, Geneva.

OPP.21:261; PP.21:061; GS.85*:46; JC.01b*:15





Taureau et cheval. Paris. 23~27-March/1921 [Fall/1925]. Graphite on paper. 25 x 32,5 cm. Private collection.

OPP.21:334; PP.25:106; Z.V:439; GG.87:21p

Taureau et cheval blessé. Paris. 25-March/1921. Graphite on beige paper. 24,5 x 30,5 cm. Musée Picasso, Paris. Dation 1979.

OPP.21:081; MPP:958; P.III:995; PP.21:063; Z.IV:250; GG.87:18p; HC.88:7.25; JC.01a*:81; PA.07a*:136p; PA.17b*:95; PD.06*:73p; TY.03*:n/a





Course de taureaux. Paris. 25-March/1921.
Graphite. 24,5 x 30,3 cm. Private collection.

OPP.21:337; PP.21:064; Z.IV:251

Taureau attaquant un cheval. Paris.
End-March/1921. Etching. 17,7 x 23,5 cm.
Musée Picasso, Paris. Dation 1979.

OPP.21:424; Ba:60.1; MPP:2017





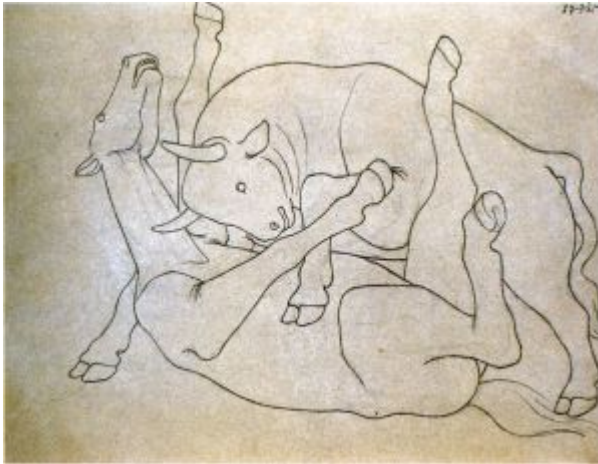
Taureau attaquant un cheval. Paris. End-March/1921. Etching. 17,6 x 23,7 cm. Musée Picasso, Paris. Dation 1979.

OPP.21:430; Ba:60.2; MPP:2018

Course de taureaux. Paris. 26-March/1921. Graphite. 23,8 x 31 cm. Private collection.

OPP.21:339; PP.21:065; Z.IV:253





Taureau attaquant un cheval. Paris. 27-March/1921 [Fall/1925]. Lead pencil on beige paper. [25] 25,5 x 32,5 cm. The Picasso Estate.

OPP.21:079; P.III:992; PP.25:107; Z.V:441; GG.87:21p; GG.93:4; HC.88:5.2

Course de taureaux. Paris. 27-March/1921. Graphite. 24 x 30,6 cm. Private collection.

OPP.21:338; PP.21:066; Z.IV:252





Guitare. Paris. April/1921. Pastel & charcoal on paper. 105 x 75 cm. Sotheby's. #30, N11162, 11/13/23.

OPP.21:342; PP.21:117; Z.IV:261

Portrait de la Marie-Laure de Noailles. Paris. [1st-Quarter] 4-April//1921. Charcoal on canvas. 130 x 97 cm. The Picasso Estate.

OPP.21:071; P.III:983; PP.21:186; Z.XXX:244;
JR.07:176p





Deux nus féminins assis. [Fontainebleau]. 4-April/1921. Pastel & pencil on paper. [20 x 22] 20,8 x 24,4 cm. C and M Arts. 2005. Formerly Christie's. #1, 5990, 07/01/98.

OPP.21:165; PP.21:096; Z.IV:265

Trois baigneuses dans un paysage. Paris. 4-April/1921. Charcoal, pastel & gouache [OIC]. 21 x 30 cm. Private collection.

OPP.21:406; PP.21:095; Z.XXX:215





Homme et femme. Paris. [Spring] [18-April] 8-April/1921. Charcoal & pastel on paper. [106] 104 x 74 cm. Christie's. #38, 2782, 05/08/13. Formerly Sotheby's. #31, N08675, 11/02/10.

OPP.21:213; P.III:1008; PP.21:101; Z.IV:224; BS.55:106; LA.82*:n/a; LO.90d*:n/a; PD.65:133p

La table. Paris. 10-April/1921 [1927]. Pastel on cardboard. 105,1 x 74,9 cm. Philadelphia Museum of Art. (Inv 1950.134.172). The Louise and Walter Arensberg Collection, 1950.

OPP.21:257; PP.21:118; Z.IV:260; CH.49*:179; JB.92:136p; JL.51:74; PH.54b*:176





Études pour trois mains. Paris. 14-April/1921. Pastel & charcoal on paper. 50 x 64 [64,5] cm. Marina Picasso Collection. (Inv 02932). Courtesy Galerie Jan Krugier, Geneva.

OPP.21:033; P.III:1007; PP.21:123; Z.IV:238; MG.15:85p; MP.81*:125; UP.00:506

Femme entrant dans la baignoire. Paris. 16-April/1921. Lead pencil on back of invitation from Bernheim Jeune Gallery (Stoënesco Exhibition April/1921). [20 x 16] 16 x 12 cm. Musée Picasso, Paris. Dation 1979.

OPP.21:084; MPP:959; P.III:1009; PP.21:126; Z.XXX:222; CK.10*:212; JC.01a*:82; UW.88:42c



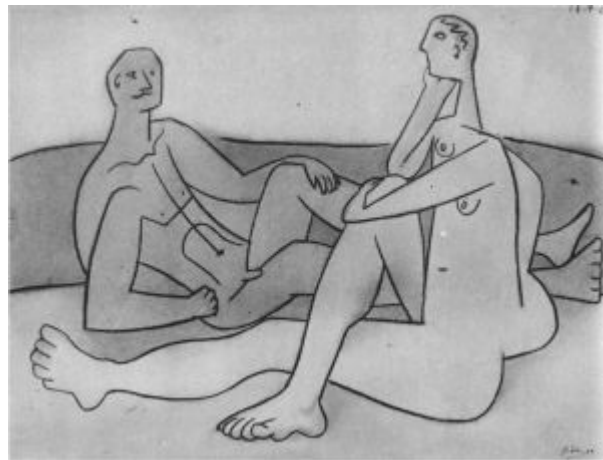


Jeune fille au chapeau jaune. Paris. 16-April/1921. Pastel on paper. 105 x 75 cm. Private collection, New York. Formerly Walter P. Chrysler, Jr. Collection.

OPP.21:210; FM:957; P.III:1003; PP.21:125; Z.IV:258;
AB.39a*:163; AB.46:121p; BS.55:84; CH.34a*:n/a; CH.37a*:23;
NY.31g*:3; NY.31h*:106; NY.33a*:5; RI.41*:171

Un homme et une femme à la plage.
Paris. 17-April/1921. Pastel [Oic]. [46,3 x 61,6] 106 x 74 cm. Christie's. #140, 05/16/90.

OPP.21:256; PP.21:128; Z.IV:225;
AS.60:49p; JL.51:66; PH.30*:62





Nature morte. Paris. 18-April/1921. Pastel on tinted paper. 25 x 32,6 cm. Christie's. #452, 21032, 06/29/22. Formerly Christie's. #177, 18138, 03/26/20.

OPP.21:357; PA.64b*:251

Nature morte géométrique à la partition. Paris. 19-April/1921. Oil on canvas. 93 x 120 cm. Museo Picasso, Málaga. On loan from Fundación Almine & Bernard Ruiz-Picasso para el Arte.

OPP.21:083; P.III:1002; PP.21:169; Z.IV:259; GS.03:1.8





Nature morte au guéridon. Paris. 20-April/1921. Pastel on paper laid down on card. 27,6 x 21,5 cm. Christie's. #136, 14185, 05/16/17.

OPP.21:319; HT.75*:13p

Trois baigneuses. Paris. 23-April/1921. Pencil on paper. 12 x 15 cm. Sotheby's. #N/A, L23007, 06/28/23.

OPP.21:085; P.III:1010; PP.21:170;
Z.XXX:240





Baigneuses. Paris. 23-April/1921. Graphite on paper. [16 x 22] 16,2 x 22,1 cm. Basil and Elise Goulandris Foundation, Athens.

OPP.21:276; PP.21:171; Z.XXX:241; AD.98*:47p

Baigneuses. Paris. 29-April/1921. Lead pencil on paper. 23 x 33 cm. Mrs, Charles J. Liebman Collection, New York.

OPP.21:086; P.III:1011; PP.21:172;
Z.IV:243; AB.39a*:154; AB.46:120p;
IC.05*:29; NY.21g*:34





Les lutteurs. Paris. 30-April/1921. Charcoal on paper. 23,3 x 29,4 cm. La Colección de Arte de Telefónica, Madrid. Formerly Hirschl and Adler Galleries, NY.

OPP.21:003; PP.21:175; FC.00*:41; GC.97*:n/a; LK.87*:14; SI.96a*:n/a; UW.88*:45; VC.90*:n/a

Deux mains croisées. Paris. 30-April/1921. Graphite & black pencil on paper. 25,5 x 16,5 cm. Private collection.

OPP.21:418; PP.21:174; Z.XXX:235





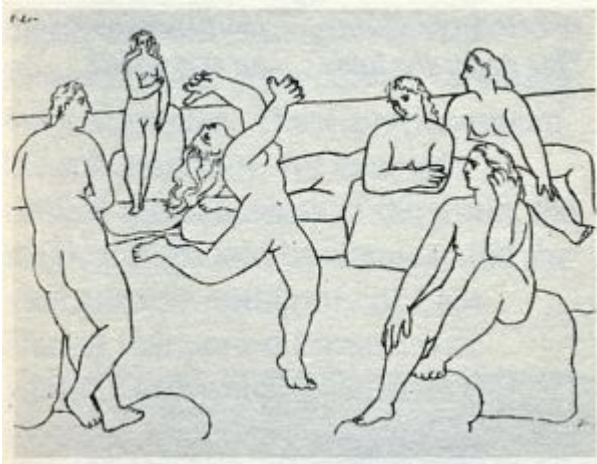
Nus au bord de la mer. Paris. 1-May/1921. Lead pencil on paper. 24 x 29,5 cm. Nationalgalerie, Museum Berggruen, Staatlichen Museen zu Berlin. On loan. Formerly Christie's. #0167, 7407, 06/19/07. Justin K. Thannhauser Collection.

OPP.21:087; P.III:1012; PP.21:177; Z.IV:287; AB.05b:23; JB.65:48; KZ.32*:n/a; RO.17*:166; TO.49*:48

Groupe de nus féminins. Paris. 1-May/1921. Pastel & watercolor on paper. 24,3 x 29,9 cm. Staatsgalerie Stuttgart. (Inv C 1959/915). Graphische Sammlung.

OPP.21:168; P.III:1018; PP.21:178; Z.IV:281; BS.12:134p; EC.02:487; ED.07*:15; GD.11*:51; GM.81*:19; GP.96:142p; IC.05*:30; JC.98*:196; JL.14*:26; UW.88*:43





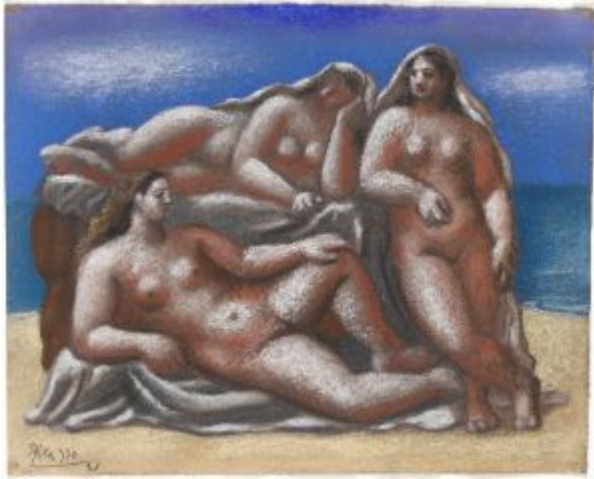
Baigneuses. Paris. 1-May/1921. Pencil. 23 x 33 cm. Private collection.

OPP.21:273; PP.21:176; Z.IV:244; GC.96:27p; KS.89:182

Tête d'enfant. Fontainebleau. May/1921. Graphite. 34 x 23,5 cm. Private collection.

OPP.21:343; PP.21:192; Z.IV:269





groupe de trois femmes nues. Paris. [Spring] 4-May/1921. Pastel on paper. 24,2 x 30,1 cm. Staatsgalerie Stuttgart. (Inv C 59/914). Formerly Private collection, Oslo.

OPP.21:167; P.III:1013; PP.21:179; Z.IV:280; AB.68:41; GD.11*:52; GM.81*:20; IC.05*:31; TG.94*:62; UW.88*:44; WS.11:73p

Guitare sur une table. Paris. 5-May/1921. Gouache & pencil. 32 x 24,5 cm. Private collection.

OPP.21:355; PP.21:180; Z.XXX:252





Baigneuses. Paris. 12-May/1921. Lead pencil on paper. 24 x 34 cm. Städtische Kunsthalle Mannheim.

OPP.21:088; P.III:1014; PP.21:182; Z.IV:275; BH.06*:203p; IC.05*:32; JL.71:86p; MD.02*:126p; RO.17:65p

Trois baigneuses à la plage. Paris. 14-May/1921. Watercolor & ink wash on paper. [23,5 x 34] 24 x 34,3 cm. Christie's. #300, 15471, 02/28/18.

OPP.21:090; P.III:1016; PP.21:183; Z.XXX:243; JR.62*:8.23





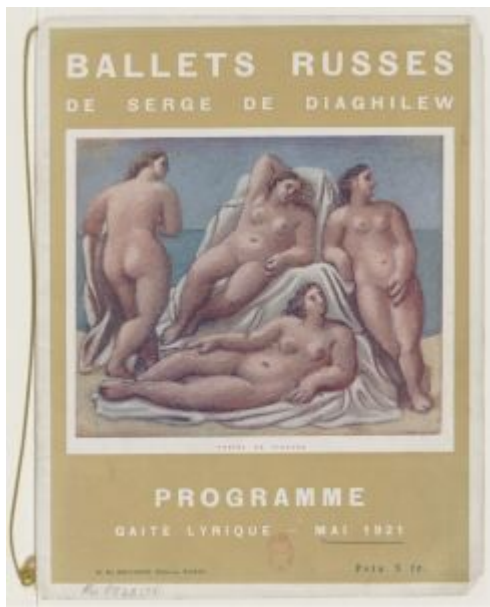
Baignade. Paris. 14-May/1921. Pen & ink on paper. 23 x 33,5 cm. Museum Ludwig, Köln. (Inv ML/Z 1994/029). Schenkung 1994.

OPP.21:091; P.III:1019; WO.92*:26

La tasse. Paris. 22-May/1921. Charcoal & estompe on paper. 23,3 x 34,3 cm. Christie's. #222, 7601, 06/25/08.

OPP.21:188





Programme de Ballets Russes de Serge de Diaghilew. Paris. [22-May]/1921. Print on paper [After *Groupe de nus féminins*]. 31,8 x 24,6 cm. Bibliothèque Musée de l'Opéra, Paris. (Inv 2248).

OPP.21:295; BH.06*:144p; DC.87:292; MA.22a:183p; NM.08:63p; RO.17*:107; TO.96b*:157

Nu couché. Paris. 22-May/1921. Graphite. 23 x 33 cm. Private collection.

OPP.21:341; PP.21:190; Z.IV:256



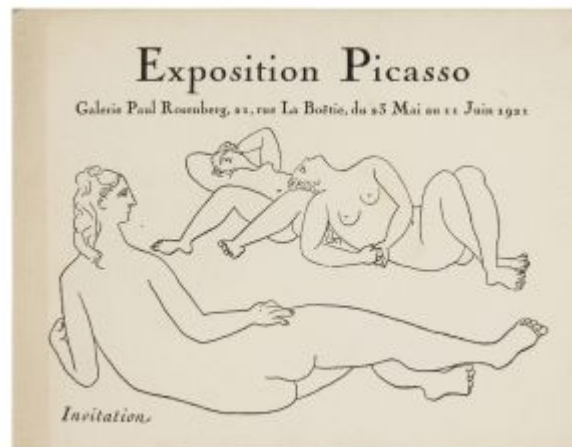


Enfant couché. Fontainebleau. 26-May/1921.
Graphite. 31 x 23,5 cm. Private collection.

OPP.21:345; PP.21:191; Z.IV:271

**Invitation: Exposition Picasso à la
Galerie Paul Rosenberg.** Paris.
June/1921. Typographic print. 11 x 14,1
cm. Sotheby's. #33, L22005, 05/04/22.
Formerly Pierre Le Guennec Collection,
France.

OPP.21:268





Portrait de Paul Valéry II. Paris. 12-June/1921.
Lithograph. 10,2 x 81 cm. Musée Picasso, Paris. Dation 1979.

OPP.21:326; Ba:225; MPP:3259

Portrait de Paul Valéry III. Paris. 12-June/1921.
Lithograph. 99 x 63 cm. Musée Picasso, Paris. Dation 1979.

OPP.21:327; Ba:226; MPP:3260





Récépissé de Picasso à Paul Rosenberg. Paris. 21, 22, 25-June/1921. Ink on paper. S/U. The Morgan Library & Museum, NYC.

OPP.21:282; CG.93:102

Trois musiciens aux masques.

Fontainebleau. Summer/1921. Oil on canvas. 200,7 x 222,9 cm. The Museum of Modern Art, NYC. (Inv 55.1949). Mrs. Simon Guggenheim Fund.

OPP.21:001; FM:959; P.III:1091; PP.21:259; Z.IV:331; AB.39a*:164; AB.46:122p; AB.46:3; AB.57*:n/a; AP.92:26; AT.11:21p; BH.06*:259p; BK.96:101p; BL.64:179p; CG.87:89; CG.93:148a; CR.01:85p; DB.89:83p; EC.02:316; EM.55:110p; FE.57:8; FG.83:4; GC.96:174-175p; GD.77:43p; GP.32*:120; GP.96:146p; GR.03:47p; HD.01:36; HD.04:32p; HG.71:113p; HJ.83:85p; HJ.96:103p; HS.94*:212; HT.34*:40; IW.93:56p; JB.96:121; JC.40:110p; JC.98:53p; JD.87:39p; JF.94a:44; JF.96:81p; JL.71:47p; JM.93:57p; JP.68:12; JR.07:n/a; JS.94:76p; KS.62:25; KS.89:213; KZ.32*:112; LG.05:31p; LL.94:15.16; LP.99:104-105p; MG.80:126p; MJ.55*:55; MM.67:29; MP.02*:73; MR.53:75p; MS.00a:3p; NC.10:19; NM.08:8; NY.34b*:21; NY.41b*:n/a; NY.44b*:n/a; NY.47o*:7; NY.54f*:n/a; NY.55c*:n/a; OW.13:52-53p; PA.20j:70p; PA.26a*:n/a; PA.31b*:n/a; PA.37a*:n/a; PC.01:200-201p; PC.66:26p; PD.09:231p; PD.19:39p; PD.65:112p; PD.82:149p; PL.03:9; PM.91:6; RJ.03:34; RM.94:31p; RP.60*:97; RP.81:10.1; RR.76:62; RS.88:83p; SC.71:134; SF.09:19p; SG.06:91p; SG.96:6.28; SN.92:23; TG.02:43p; TI.71:22; TL.95:19p; TM.06:66p; TO.77:59; TR.80:1; TV.06:159p; UP.00:490; VB.99:28-29p; VK.97*:81p; WA.41b*:n/a; WA.80a*:67;



WF.86:489; WR.72*:113p; WR.80*:231p;
etc.



Musiciens aux masques. Fontainebleau.
Summer/1921 [1924]. Oil on canvas. 204,5 x 188,3
cm. Philadelphia Museum of Art. (Inv 1952.61.96). A.
E. Gallatin Collection, 1952.

OPP.21:002; FM:960; P.III:1090; PP.21:260;
Z.IV:332; AB.34*:128; AB.39a*:165; AB.46:123p;
AB.57*:n/a; AC.46:204; AS.60:31; BF.16*:n/a;
BH.06*:241p; BM.05:195p; BS.55:179p; CG.00:259;
CG.93:148b; DC.70*:256; DC.87:288; DT.78:2p;
EC.02:315; EF.66:8r; FS.82:58p; GP.32*:119;
HJ.83:21p; HJ.96:21p; IS.98:83p; JC.40:111p;
JF.03:7.3; JF.96:80p; JG.90:49p; JL.06:123p;
JL.71:236p; KZ.32*:107; MC.05:108p; MC.11:137p;
MF.06*:65; NW.70:84; NY.36l*:n/a; OD.96:57p;
PC.95:43; PD.09:226p; PD.65:113p; PH.43*:n/a;
RP.67a:12; RP.91:28; SC.71:133; TC.13:1.14;
TH.75:102; TI.71:102p; TO.77:58; TR.80:2;
TV.06*:14; UP.00:489; WR.80*:230; WW.73:87p;
WW.91:283p

Trois femmes à la fontaine.
Fontainebleau. Summer/1921. Oil on
canvas. 19 x 24 cm. Musée de l'Orangerie,
Paris. (Inv RF.1963.79). Walter-Paul
Guillaume Collection.

OPP.21:004; P.III:1060; PP.21:210;
VR.90:57p





Trois femmes à la fontaine. Fontainebleau. Summer/1921. Sanguine & oil on canvas. 200 x 161 cm. Musée Picasso, Paris. Dation 1979.

OPP.21:005; MPP:74; P.III:1082; PP.21:223; AB.97b*:212; EC.02:389; GM.11:265p; HS.94*:213; JB.08:81p; JC.98*:200; JF.96:92p; JM.93:63p; LE.21*:237; LO.90c:302p; MA.01a*:n/a; MA.08a*:n/a; PA.79a*:119; PC.01:203p; PF.07*:n/a; RO.17*:161; RS.88:57p; SD.05*:41; SP.04*:n/a; TR.80:4; TY.03*:n/a; UP.00:492; UW.88:37c; WR.80*:232p

Trois femmes à la fontaine. Fontainebleau. Summer/1921. Oil on canvas. 50 x 52 cm. Musée de l'Orangerie, Paris. (Inv RF.1963.78). Walter-Paul Guillaume Collection.

OPP.21:007; P.III:1067; PP.21:208; HN.00*:29; MI.18*:n/a; VR.90*:23





Trois femmes à la fontaine. Fontainebleau. Summer/1921. Pastel on wove paper. 64,5 x 50 cm. The Museum of Fine Arts, Houston. Gift of Miss Ima Hogg and other Trustees of the Varner-Bayou Bend Heritage Fund.

OPP.21:008; P.III:1052; PP.21:214; Z.IV:313

Trois femmes à la fontaine (La source).

Fontainebleau. Summer/1921. Oil on canvas. 203,9 x 174 cm. The Museum of Modern Art, NYC. (Inv 332.1952). Gift of Mr. & Mrs. Allan D. Emil.

OPP.21:009; P.III:1077; P.IV:2; PP.21:227; Z.IV:322; AH.13:39; AP.92:23; AT.11:88p; CG.00:252; CG.87:74; EB.70:104p; EC.02:388; GC.96:173p; GD.11:4p; GM.11:264p; GP.96:139p; GR.03:50p; GT.10:68.1; HJ.83:87p; HJ.96:105p; HN.13:46p; HR.89:117p; JB.65:52; JB.92:136p; JF.03:7.2; JF.94a:50; JL.06:127p; JR.07:n/a; JS.46:8; KS.62:24; KS.89:184; LA.16*:115p; LF.00:1.1; LO.90c:302p; LP.99:103p; MG.80:127p; MJ.55*:54; MP.02*:106; MS.00a:28p; NC.10:20; NM.08:19; NY.45a*:6; NY.54f*:n/a; PC.77:232p; PD.09:227p; PD.65:120p; PD.95:6p; PH.45a*:n/a; RM.94:35p; RO.17:64p; SF.48b*:8; SG.06:89p; SG.96:4.5; TC.13:1.15; TH.75:99; TI.71:87p; TL.95:20p; TO.64*:n/a; TR.80:3; TV.06:158p; UP.00:493; UW.88:37a; VR.90:54p; WR.72*:115p; WR.80*:233p; WW.89:292p; WW.91:279p; YR.00:22p





Trois femmes à la fontaine. Fontainebleau. Summer/1921. Pastel on laid paper on canvas. [66 x 50,8] 66 x 51 cm. Private collection. Courtesy Tobias Mueller Modern Art, Zürich. Formerly Marlborough Fine Art Galleries, London.

OPP.21:010; P.III:1065; PP.21:213; JC.98*:199; JL.14*:30; MA.22a*:104; RO.17*:160; UW.88*:40



Femme assise. Fontainebleau. Summer/1921. Gouache. 55 x 41 cm. Private collection, Paris. Courtesy Galerie Schmit, Paris.

OPP.21:012; PP.21:267; UW.88*:39



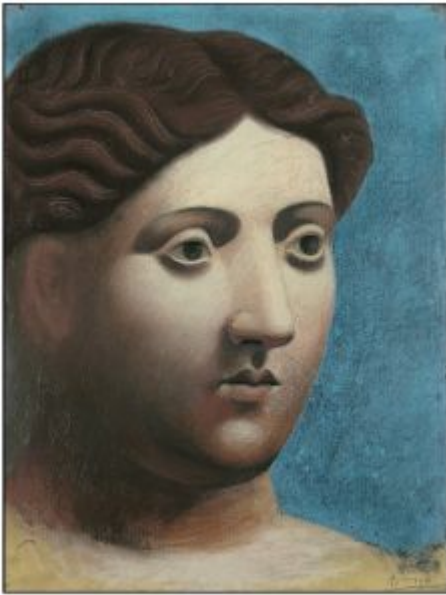
La liseuse. Fontainebleau. Summer/1921. Pastel on paper. [62 x 47] [62,8 x 47,6] 63,3 x 48 cm. Christie's. #10, 7857, 06/23/10.

OPP.21:015; P.III:950; PP.21:268; Z.VI:1422; BS.55:255; EM.55:119p; PA.57b*:147; PA.60c*:n/a; PA.62d*:n/a; PA.66h*:n/a; SB.63*:87

Tête de femme. Fontainebleau. Summer/1921. Black chalk on rose paper. 63,5 x 47,8 cm. Sotheby's. #28, 06/27/95.

OPP.21:018; PP.21:269b





Tête de femme. Fontainebleau. Summer/1921. Pastel on paper. [62 x 46] 63,5 x 48 cm. Fondation Beyeler, Riehen/Basel. (Inv 89.7).

OPP.21:019; P.III:1113; PP.21:281; Z.IV:349; AB.46:118p; AH.13*:49; BR.93*:97; BS.96*:123; CM.90*:138; GM.11*:70; KB.01*:71; LO.53a*:11; LO.90c*:138; MA.89a*:n/a; MU.22*:n/a; NB.96:19; PP.20*:154; RO.17*:162; WR.96:44p

Nature morte avec pichet et pain. Fontainebleau. Summer/1921. Oil on canvas. 101 x 128 cm. Baron E. de Rothschild Collection, Paris.

OPP.21:021; P.III:1102; PP.21:203; Z.IV:285; CG.93:247; JB.92:137p; JC.40:112p; MJ.55*:52; MR.59*:31; MU.55*:47; PA.52a*:129; WW.91:264p





Mère et enfant. [Fontainebleau]. Summer/1921 [1922]. Oil on canvas. 97,2 x 71,1 cm. Abigail and Leslie H. Wexner Collection. Courtesy Richard Gray Gallery. Formerly Private collection, Japan; Sotheby's. #47, 11/15/89; Mr. & Mrs. Alex L. Hillman Collection, NY.

OPP.21:022; P.III:1146; PP.21:200; Z.IV:289; BS.55:189p; EC.02:386; GP.32*:117; HJ.83:89p; HJ.96:107p; JL.51:70; JL.71:15p; JR.62*:4.17; KZ.32*:109; LB.58:67p; MJ.55*:56; MM.67:30; MS.00a:3p; NY.52a*:4; NY.53f*:36; PA.17b:149p; PH.16b*:54; RP.60*:98; RP.81:10.3; TI.71:103p; WS.95a*:58; WW.91:274p

Maternité. Fontainebleau. Summer/1921. Oil on canvas. 101,8 x 83,5 cm. Pola Museum of Art, Hakone, Kanagawa, Japan. Formerly Mr. and Mrs. Josef Rosensaft Collection, NY.

OPP.21:023; PP.21:201; JR.62*:4.16; MF.06:117p; WS.95a*:57; WW.91:274p



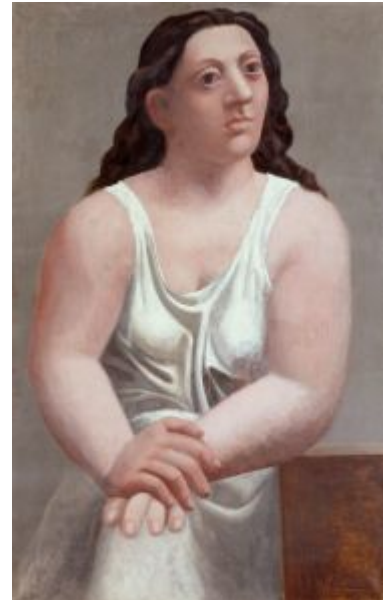


Femme nue assise s'essuyant le pied. [Fontainebleau].
Summer/1921. Pastel on paper. 66 x 50,8 cm. Nationalgalerie,
Museum Berggruen, Staatlichen Museen zu Berlin. (Inv NG MB
38/2000). Extended loan to National Gallery, London.

OPP.21:024; P.III:1109; PP.21:266; Z.IV:330; BL.06*:115p;
BR.96*:39; CG.93:104; CH.10*:129p; CK.10:220; HN.13:50p;
HS.98*:145; IC.05*:33; JR.07:215p; JR.62*:4.27; MF.95:40;
RD.96*:45; RK.94*:49; RO.17*:174; UP.00:495; WS.11:38p;
WW.91:277p

Femme assise (Femme à la chemise). [Fontainebleau].
Summer/1921. Oil on canvas. 116 x 73 cm. Staatsgalerie
Stuttgart. (Inv 2562). Erworben mit Lotto-Mitteln 1959.
Formerly J. Eichmann Collection, Zurich.

OPP.21:025; P.III:1110; PP.21:264; Z.IV:328; AS.60:30;
BD.16*:39; CG.93:105; EC.02:376; GD.11*:50; GM.81*:18;
JC.40:108p; JC.98*:207; KZ.32*:108; MA.22a*:107;
MI.53*:43; TB.10*:40; UP.00:496; UW.88:35a; WW.91:278p



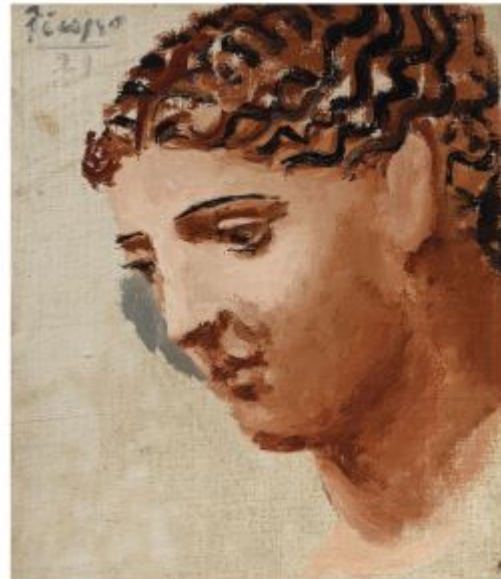


Femme nue debout. [Fontainebleau]. Summer/1921. Oil on canvas. 132 x 91 cm. Národní Galerie, Prague. (Inv O 3217). Purchased, 1923.

OPP.21:026; P.III:1111; PP.21:263; Z.IV:327; GP.96:147p; JC.98:104p; JP.60:26; PS.05:40; WC.32*:n/a; WW.91:278

Tête de femme. Fontainebleau. Summer/1921. Oil on canvas. 18,6 x 16 cm. Christie's. #15, 21886, 06/28/23. Formerly Nationalgalerie, Museum Berggruen, Staatlichen Museen zu Berlin. Heinz Berggruen, Paris.

OPP.21:034; P.III:1118; PP.21:272; Z.IV:351; BL.06*:117p; GE.88a*:84; RO.17*:164





Tête de femme. Fontainebleau. Summer/1921. Pastel on paper. [76] 75 x 60 cm. Mr. and Mrs. Allan D. Emil Collection, NY. Formerly Mme. Cuttoli Collection.

OPP.21:036; P.III:1122; PP.21:270; Z.IV:337; JR.62*:4.22

Tête de femme. Fontainebleau. Summer/1921. Charcoal on paper. 61 x 47 cm. Private collection, New York. Formerly Christie's. #25, 11/14/90; Estate of Paul Rosenberg.

OPP.21:037; PP.21:269a; NY.21g*:35; RO.17*:163; TO.64*:78





Nu féminin assis sur un rocher. Fontainebleau. Summer/1921.
Tempera on wood panel. [15 x 10] 15,8 x 11,1 cm. The Museum of
Modern Art, NYC. James Thrall Soby Bequest, 1979.

OPP.21:042; P.III:1098; PP.21:254; Z.IV:309; AB.39a*:159;
AB.57*:n/a; BS.12*:70; FP.73:263p; RP.60*:96; VK.97*:83p;
WR.72*:117p; WR.80*:235p

La source. Fontainebleau. Summer/1921.
Soft crayon on canvas. 153,5 x 201 cm.
Musée Picasso, Paris. Dation 1979.

OPP.21:044; MPP:75; P.III:1046;
PP.21:243; CG.12:27p; CK.04*:19;
JC.98*:193; LA.16*:121p; LE.21*:234;
MA.08a*:n/a; MG.18:56p; MI.18*:n/a;
MP.85:70; PA.07d*:n/a; PA.79a*:120;
PF.07*:n/a; PP.20*:151; RK.94:144p;
SD.05*:40; TY.03*:n/a; UP.00:500;
UW.88:34a; VE.02*:n/a





La source. Fontainebleau. Summer/1921. Oil on canvas. 64,2 x 90 cm. Moderna Museet, Stockholm. (Inv NM 6360). Gift from Grace and Philip Sandblom, 1970.

OPP.21:045; P.III:1047; PP.21:244; Z.IV:304;
BS.12*:84; DE.98:126p; EC.02:387; GD.11*:53;
HT.34*:39; JB.08:41p; JB.12:5; JC.40:114p;
JC.98*:192; LO.90c*:139; LW.15*:119p;
MA.22a:148p; UW.88*:34

Trois femmes à la fontaine (Étude).

Fontainebleau. Summer/1921. Oil on canvas.
34 x 25 cm. Private collection, Paris.

OPP.21:046; P.III:1078; PP.21:216;
Z.IV:316; GC.96:174p





Étude pour Trois femmes à la fontaine (La source): tête de femme. Fontainebleau. Summer/1921. Pastel on dark beige paper. 62,6 x 47 cm. Musée Picasso, Paris. Dation 1979.

OPP.21:047; MPP:969; P.III:1100; PP.21:225; Z.IV:345; CK.04*:24; GD.77:39p; JC.98*:198; MA.08a*:n/a; PD.06*:29p; PF.07*:n/a; RD.00*:90; TY.03*:n/a; WS.11:72p

La source (Trois femmes à la fontaine) (II). Fontainebleau. Summer/1921. Drypoint. 17,7 x 23,5 cm. McNay Art Museum, San Antonio, TX. Gift of Gilbert M. Denman, Jr., 1974. Also Christie's. #208, 9512, 10/31/00.

OPP.21:048; B.I:45; Ba:61.2; CK.04*:25; LK.87*:15; UW.88*:80





Baigneuse allongée avec un livre. Paris [Fontainbleau]. Summer/1921. Graphite on wove paper. 22,5 x 27,9 cm. The Metropolitan Museum of Art, NYC. (Inv 1984.433.271). Bequest of Scofield Thayer, 1982.

OPP.21:055; GT.10*:67; MG.92*:n/a;
TK.98a*:57

Maternité. Paris. [Winter] [Spring] Summer/1921. Oil on canvas. [154 x 104] 162 x 97 cm. Fundación Almine & Bernard Ruiz-Picasso para el Arte.

OPP.21:104; P.III:1036; PP.21:045; Z.VI:1392; BS.55:105;
DP.20:360p; GS.03:1.9; HK.65:90p; JL.13*:2; LO.90c*:140;
MI.53*:42; PA.17b*:165; TC.13:1.12; TO.96b*:161;
WS.95a*:56



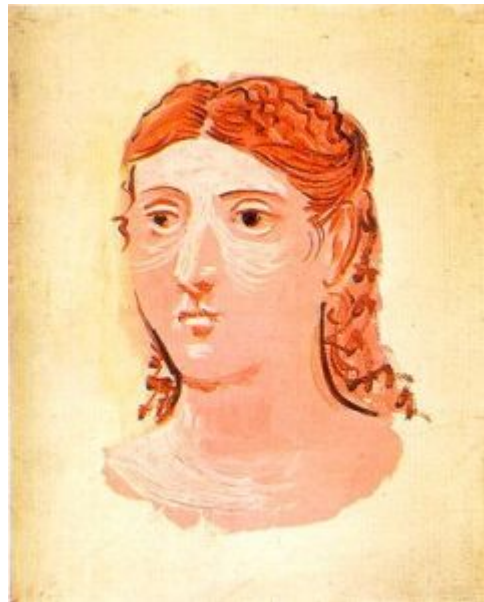


La fontaine. Fontainebleau. Summer/1921. India ink on paper. 24,5 x 31,5 cm. The Picasso Estate.

OPP.21:108; P.III:1045

Tête de femme. Fontainebleau. Summer/1921. Oil on canvas. 24 x 19 cm. The Picasso Estate.

OPP.21:111; P.III:1048





Tête de femme de profil. Fontainebleau. Summer/1921.
Oil on canvas. 10 x 8 [12 x 8.2] cm. The Picasso Estate.

OPP.21:115; P.III:1053; PP.21:273; Z.IV:339

Tête de femme de profil. Fontainebleau.
Summer/1921. Oil on canvas. 8,5 x 8 cm. The
Picasso Estate.

OPP.21:116; P.III:1054; PP.21:275; Z.IV:342





Tête de femme de profil. Fontainebleau. Summer/1921. Oil on canvas. 8 [8.2] x 8 cm. The Picasso Estate.

OPP.21:117; P.III:1058; PP.21:274; Z.IV:340

Femme de profil. Fontainebleau. Summer/1921. Oil on canvas. [23,7 x 8.3] 22,5 x 8,5 cm. The Picasso Estate.

OPP.21:118; P.III:1059; PP.20:514; Z.IV:207





Trois femmes à la fontaine. Fontainebleau. Summer/1921. Oil on canvas. [21 x 33,5] 22,3 x 34,3 cm. Helly Nahmad Collection, Monaco/London.

OPP.21:119; P.III:1066; HN.13*:55p;
LO.98b*:n/a; RT.99*:65

Profil de femme. Fontainebleau. Summer/1921. Oil on canvas. 41 x 33 cm. Galerie Beyeler, Basel.

OPP.21:121; P.III:1072





Trois femmes à la fontaine (La source): main (Étude). Fontainebleau. Summer/1921. Pastel on paper. 24,5 x 32 cm. The Picasso Estate.

OPP.21:122; P.III:1073; PP.21:222; Z.IV:324

Mère et enfant. Fontainebleau. Summer/1921. Oil on canvas. 154 x 104 cm. Neue Pinakothek, München. (Inv 14635). Bayerische Staatsgemäldesammlungen, München. Erworben 1980. Formerly Marina Picasso Collection. (Inv 12271).

OPP.21:123; P.III:1074; PP.21:197; Z.VI:1397; BS.55:104; HK.65:89p; KS.62:23; MI.53*:41; MJ.55*:53; MP.81*:128; NM.08:94p; PD.65:120p; UW.88*:36; WS.94:54p





Étude pour Trois femmes à la fontaine: main droite.

Fontainebleau. Summer/1921. Charcoal, sanguine & touches of eraser. 24.5 x 32,1 cm. Musée Picasso, Paris. Dation 1979.

OPP.21:124; MPP:966; P.III:1076; PP.21:219; Z.IV:323; NY.55f*:6; PF.07*:n/a; RK.01*:n/a; TY.03*:n/a; WR.80*:232p

Femmes à la fontaine. [Fontainebleau].
Summer/1921. Pastel on paper. S/U. Private collection.

OPP.21:126; P.III:1081





Une vue nocturne à Fontainebleau. Fontainebleau. Summer/1921. Oil on canvas. 55 x 38 cm. Sotheby's. #21, L11002, 02/08/11. Formerly Marina Picasso Collection..

OPP.21:134; P.III:1089; MB.84*:73; TK.90b*:2

Guitare sur table. Fontainebleau. Summer/1921. Oil on canvas [Obverse of *Le portail*]. 99 x 97,5 [97] cm. Helly Nahmad Collection, Monaco/London. Formerly Sotheby's. #74, 05/16/90.

OPP.21:137; P.III:1095; PP.21:262; Z.IV:334; CB.11*:80p; HN.13*:87p; LO.98b*:n/a; RT.99*:16; TC.13:1.8; TO.14:30p





Deux femmes et une fillette près d'une fontaine.

Fontainebleau. Summer/1921. Graphite on paper. 32 x 25 cm.
The Picasso Estate.

OPP.21:138; P.III:1103; PP.21:253; Z.XXX:257;
GM.11:267p; UW.88:41a

Nu féminin tenant un gobelet. Fontainebleau.
Summer/1921. Lead pencil on paper. 32 x 24,5 cm. The
Picasso Estate.

OPP.21:139; P.III:1105; PP.21:248; Z.XXX:254





Deux femmes au gobelet. Fontainebleau. Summer/1921.
Lead pencil on paper. 32 x 24,5 cm. The Picasso Estate.

OPP.21:140; P.III:1106; PP.21:249; Z.XXX:255; GM.11:267p;
UW.88:41b

Grande baigneuse. Fontainebleau. Summer/1921 [~1922]. Oil on
canvas. 182 x 101,5 cm. Musée de l'Orangerie, Paris. (Inv
RF.1963.77). Walter-Paul Guillaume Collection.

OPP.21:141; P.III:1112; PP.21:265; Z.IV:329; AC.46:206;
BP.21:50p; BS.55:387p; DB.89:85p; EC.02:378; GB.87:106;
GL.00*:78; IS.98:84p; JB.08:33p; JL.51:67; JR.07:n/a;
LO.90c*:141; LP.99:107p; NM.08:18; PA.46c*:68; PD.09:235p;
RO.17*:165; RR.09*:22; UP.00:494; UW.88*:38; VB.99:30p;
WR.80*:235p





Nu à la draperie. Fontainebleau. Summer/1921 [1923]. Oil on canvas. [180 x 98] [160 x 95] 155 x 95 cm. Musée de l'Orangerie, Paris. (Inv RF.1960.33). Walter-Paul Guillaume Collection.

OPP.21:143; P.III:1121; PP.21:255; Z.IV:308; CK.10:216; GB.87:107; GL.00*:80; LE.21*:100; NY.36b*:22; NY.36h*:5; PA.17b*:170; PA.29b*:n/a; UW.88:42a

Trois femmes à la fontaine.

Fontainebleau. Summer/1921. Oil on canvas. [19,3 x 24,1] 19,2 x 23,8 cm. Private collection. Courtesy Ars Docet. Formerly Christie's. #0052, 1900, 11/06/07; Christie's. #50, 9770, 11/06/01; Wright Ludington Collection.

OPP.21:154; P.III:1057; PP.21:209; Z.IV:315; DK.61*:13; LA.71a*:37; NY.36b*:24; SF.45a*:n/a





Baigneur et baigneuses. [Juan-les-Pins].
[1920~1921] [February] [Summer]/1921. Oil on
canvas. 54 x 81 cm. Helly Nahmad Collection,
Monaco/London. Formerly Acquavella Galleries,
NY; Sotheby's. #47, L08002, 02/05/08; Sotheby's.
#10, N08022, 11/04/04.

OPP.21:163; P.III:978; PP.20:440; Z.IV:208;
AN.18*:25; CB.11*:121p; GD.11*:49;
HN.13*:53p; IC.05:63p; MD.02:155p; MF.06*:52;
NY.03a*:n/a; PI.58*:67; WR.96:40p

Tête et main de femme. [Fontainebleau].
[Summer]/1921 [1922]. Oil on canvas [Possibly a
later version of *Tête et main de femme*]. [65 x 54,5]
[65 x 54] 65,4 x 54,9 cm. Alicia Koplowitz
Collection, Madrid. Formerly Christie's. #0012,
1831, 05/09/07.

OPP.21:164; P.III:1117; PP.21:287; Z.IV:341;
AC.81:108p; AM.52b*:68; BR.77*:4; BS.55:108;
CS.87*:3; JL.51:68; MA.22a*:105; MB.80*:222;
MI.53*:39; NE.57*:n/a; NE.88*:n/a; PA.78d*:226;
PA.88b*:19; TK.78b*:112; TK.96*:n/a; VN.56*:30;
VR.90*:22





Nature morte à la guitare. [Paris] Fontainebleau. [Fall] Summer/1921. Oil on canvas. 100 x 65 cm. Musée National d'Art Moderne, Centre Georges Pompidou, Paris. (Inv AM.4321P). Achat 1965.

OPP.21:171; FM:960bis; P.III:1097; PP.21:288; Z.XXX:253; FS.82:46p; GC.96:178p

Tête de femme. [Fontainebleau]. [Summer/1921]. Oil on canvas. [61 x 46] 61,4 x 46,5 cm. Gemeentemuseum Den Haag. (Inv SCH-1956-0042).

OPP.21:186; P.III:1120; PP.21:284; Z.IV:348; MA.22a*:106; MD.02*:134p





Trois femmes à la fontaine. Fontainebleau. Summer/1921. Oil on canvas. 33 x 37,2 cm. Helly Nahmad Collection, Monaco/London. Formerly Christie's. #38, 1994, 05/06/08.

OPP.21:187; P.III:1063; PP.21:206; Z.IV:319; HN.13*:57p

Paysage: Fontainebleau. Fontainebleau. [Summer]/1921. Pastel on paper laid down on cardboard. 50 x 65 cm. Sotheby's. #42, N08485, 11/03/08. Formerly Walter P. Chrysler, Jr. Collection.

OPP.21:191; P.III:1042; PP.21:258; Z.IV:279; AB.39a*:156; AB.46:119p; BS.55:385p; CT.23:19p; NY.31o*:35; NY.59f*:11; NY.68c*:n/a; NY.71e*:n/a; RI.41*:172





Scène mythologique, trois femmes à la fontaine. Paris. [Summer]/1921. Oil on canvas. [20,9 x 16] 21 x 16,1 cm. Christie's. #371, 17660, 11/12/19. Formerly Christie's. #49, 2844, 05/06/14; Christie's. #15, 2045, 11/06/08.

OPP.21:194

**Étude pour Trois femmes à la fontaine:
main droite de la femme de gauche.**

Fontainebleau. Summer/1921. Charcoal, sanguine & touches of eraser. 24,5 x 32,1 cm. Musée Picasso, Paris. Dation 1979.

OPP.21:195; MPP:967; P.III:1070;
PP.21:220; Z.IV:326; PF.07*:n/a;
RK.01*:n/a; TY.03*:n/a; WR.80*:232p;
WW.91:279p





Trois femmes à la fontaine (Étude).

Fontainebleau. Summer/1921. Pencil on primed wood panel. 21,5 x 27 cm. Musée Picasso, Paris. Dation 1979.

OPP.21:196; MPP:965; PP.21:224; EC.02:392; FF.05*:n/a; JC.98*:195; MA.08a*:n/a; PA.79a*:493; PF.07*:n/a; RO.17*:159; TY.03*:n/a; WR.80*:232p; WW.91:279p

Tête d'homme. Fontainebleau. Summer/1921. Pastel on paper. [77 x 60] 68,9 x 53,7 cm. Christie's. #26, 2352, 11/03/10. Formerly Mr. George Friedland Collection, Merion, PA; Mme. Cuttoli Collection.

OPP.21:206; P.III:1123; PP.21:269; Z.IV:336; BS.55:386p; JR.62*:4.19; PH.63a*:29



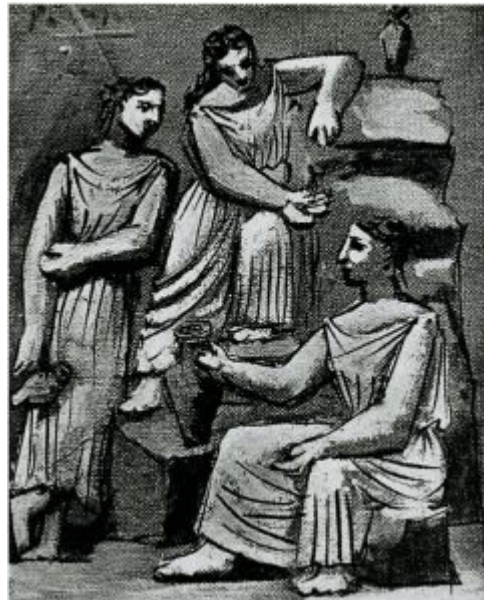


Trois femmes à la fontaine. Fontainebleau. Summer/1921.
Gouache & oil. 31 x 24 cm. Private collection.

OPP.21:224; P.III:1055; PP.21:205; Z.IV:312; BH.06*:201p

Trois femmes à la fontaine. Fontainebleau.
Summer/1921. Oil on canvas [OIC]. 24 x 19 cm.
Private collection.

OPP.21:225; P.III:1056; PP.21:207; Z.IV:320;
HT.34*:113; MZ.23:n/a; NY.24a*:34





Trois femmes à la fontaine. Fontainebleau. Summer/1921. Oil on canvas [OIC]. 19 x 24 cm. Private collection.

OPP.21:226; P.III:1061; PP.21:204; Z.IV:321

Trois femmes à la fontaine. Fontainebleau. Summer/1921. Oil on canvas. 48,5 x 56 cm. Helly Nahmad Collection, Monaco/London.

OPP.21:227; P.III:1062; PP.21:212; Z.IV:314; HN.13*:59p





Tête de femme. Fontainebleau. Summer/1921. Oil on canvas [Oic]. 22 x 16 cm. Private collection.

OPP.21:228; P.III:1116; PP.21:285; Z.IV:357

Trois femmes à la fontaine.

Fontainebleau. Summer/1921. Oil on canvas [Oic]. S/U. Private collection.

OPP.21:229; P.III:1064; PP.21:211; Z.IV:318





Femme assise. Fontainebleau. [Spring] Summer/1921. Oil on canvas. 33,2 x 24,2 cm. Pola Museum of Art, Hakone, Kanagawa, Japan.

OPP.21:230; P.III:1068; PP.21:188; Z.IV:284; NY.43i*:6

Femme assise. Fontainebleau. [Spring] Summer/1921. Oil on canvas [OIC]. 35,2 x 27 cm. Private collection.

OPP.21:231; P.III:1069; PP.21:187; Z.IV:283





Tête de femme. Fontainebleau. Summer/1921. Pastel on paper. 63,5 x 50 cm. Private collection.

OPP.21:232; P.III:1115; PP.21:280; Z.IV:356; LP.99:101p

**Étude pour Trois femmes à la fontaine:
main gauche de la femme de droite.**

Fontainebleau. Summer/1921. Charcoal, sanguine & touches of eraser. 32,1 x 24.5 cm. Musée Picasso, Paris. Dation 1979.

OPP.21:233; MPP:968; P.III:1071;
PP.21:221; Z.IV:325; PF.07*:n/a;
PP.20*:148; RK.01*:n/a; TY.03*:n/a;
WR.80*:232p





Trois femmes à la fontaine. Fontainebleau. Summer/1921. Oil on canvas [OiC]. 24 x 24 cm. Private collection.

OPP.21:235; P.III:1079; PP.21:215; Z.XXX:242

Bouteille et paquet de tabac. Fontainebleau. Summer/1921. Oil on canvas. 100 x 100 cm. Private collection.

OPP.21:236; P.III:1094; PP.21:261; Z.IV:333





Mère et enfant. Fontainebleau. Summer/1921.
Oil on canvas. 21 x 27 cm. The Honorable & Mrs.
David Straz, Jr.

OPP.21:237; P.III:1096; PP.21:195; Z.IV:286;
JL.14*:28

Tête de femme de trois-quarts.
Fontainebleau. Summer/1921. Oil on canvas
[OIC]. 8,5 x 8 cm. Private collection.

OPP.21:239; P.III:1099; PP.21:276;
Z.IV:343





Guitare, journal et bouteille sur une table. Fontainebleau. Summer/1921. Oil on canvas [OïC]. 100 x 73 cm. Private collection.

OPP.21:240; P.III:1101; PP.21:290; Z.XXX:250

Femme au jupon rouge. Fontainebleau. Summer/1921. Oil on canvas. 46 x 38 cm. Tel Aviv Museum of Art.

OPP.21:241; P.III:1104; PP.21:245; Z.IV:305





Trois mains au gobelet. Fontainebleau. Summer/1921. Charcoal & chalk on paper. 61,5 x 48 cm. Sotheby's. #13, PF1806, 03/22/18. Formerly Sotheby's. #42, N09415, 11/05/15.

OPP.21:242; P.III:1107; PP.21:247; Z.XXX:258; UW.88*:41

Tête de femme. [Paris] Fontainebleau. [Summer]/1921. Pastel on gray paper. [63 x 51] 64,7 x 49,8 cm. Milwaukee Art Museum. (Inv W1947.2). War Memorial Collection. Gift of Mrs. William D. Vogel.

OPP.21:263; PP.21:277; Z.IV:338; JR.62*:4.20; NY.41n*:17; NY.42g*:4; NY.43g*:n/a; VO.16*:49p





Tête de femme. Fontainebleau. [Summer]/1921. Oil on canvas. 23 x 21 cm. The Kreeger Museum, Washington, DC.

OPP.21:271; PP.21:283; Z.IV:350; JC.40:114p

Autoportrait. Fontainebleau. [Summer/1921]. Gelatin silver print. 11,3 x 7,3 cm. Musée Picasso, Paris. (Inv APPH 2797).

OPP.21:275; AB.97b*:6; BA.19b*:77p; PB.21:143; YP.13*:L





Olga Picasso dans l'atelier de Fontainebleau.
Fontainebleau. Summer/1921. Gelatin silver print.
7 x 12 cm. The Pushkin State Museum of Fine
Arts, Moscow.

OPP.21:286; AB.97b*:203; JR.07:184p;
JR.14:110-111p; LA.16:13p; MD.02:135p;
VO.16:35p; WR.96:314p

Olga sur un lit. [Paris] Fontainebleau. [Summer]/1921. Gelatin
silver print. [10,6 x 6,2] 14 x 9 cm. Musée Picasso, Paris. (Inv
APPH 6654).

OPP.21:293; AB.97b*:192; CG.05:1; MG.15:19p; PA.17b*:246;
WR.96:306p





Trois femmes à la fontaine. Fontainebleau. [Summer]/1921. Oil on canvas. 14 x 15,1 cm. The Barnes Foundation, Merion, PA. (Inv BF.251).

OPP.21:325

Trois femmes à la fontaine (La source): la femme de gauche (Étude). Fontainebleau. [Summer]/1921. Oil on canvas [OIC]. S/U. Private collection.

OPP.21:352; PP.21:226; Z.VI:1420





Trois femmes à la fontaine. Fontainebleau. [Summer]/1921. Oil on canvas [OIC]. 22,2 x 28 cm. Private collection.

OPP.21:353; PP.21:217; Z.VI:1421

Femme au panier. Fontainebleau. [Summer]/1921. Graphite on paper. 32 x 25 cm. Private collection.

OPP.21:387; PP.21:252; Z.XXX:256





Mère et enfant. Fontainebleau [Paris].
[Summer]/1921. Oil on canvas. 98,5 x 93 cm.
Fondation Marie-Anne Poniowski Krugier. (Inv CP
2982). Courtesy Galerie Jan Krugier, Geneva.

OPP.21:144; P.III:1125; JC.98*:186; KB.01*:74;
MG.13*:55p; PD.02*:35

Nu couché. [Fontainebleau].
[Summer]/1921. Pencil on paper. 18,7 x
26,7 cm. Dallas Auction Gallery. 2012.
Formerly Sotheby's. #255, N07721,
11/08/01.

OPP.21:157





Trois femmes à la fontaine. [Fontainebleau]. [Summer]/1921. Oil on canvas. 23 x 24,5 cm. Musée National d'Art Moderne, Centre Georges Pompidou, Paris. (Inv AM.1984-630). Donation Louise et Michel Leiris, 1984.

OPP.21:172; P.III:1080; PP.21:218; JC.98*:197; UP.00:491; UW.88*:37

Deux femmes à la fontaine.

Fontainebleau. 25-June/1921. Pastel. 13,5 x 16,5 cm. Perls Galleries, New York.

OPP.21:114; P.III:1051; PP.21:246; Z.IV:317; UW.88*:42





Moine (Portrait de Max Jacob en moine). Fontainebleau. July/1921. Charcoal on green paper. [64 x 48] 62,5 x 47,5 cm. Marina Picasso Collection. (Inv 3291). Courtesy Galerie Jan Krugier, Geneva.

OPP.21:136; P.III:1093; PP.21:229; Z.IV:310; GS.85*:47; HS.94*:211; TR.80:14

La vigne. Fontainebleau. 4-July/1921. Black conté crayon on paper. 64,1 x 48,8 cm. Private collection. Formerly Christie's. #2, 2352, 11/03/10; William S. Rubin & Phyllis Hattis Collection, NY; Mr. & Mrs. Paul Osborn Collection, NYC.

OPP.21:193; PP.21:228; Z.IV:292; AB.07*:313p; BS.96*:126; EC.02:408; HO.16a*:89p; PF.07*:65p; PF.07*:65p; WR.80*:227; WR.96:39p





Le salon de la maison de Fontainebleau.

Fontainebleau. 5-July/1921. Graphite on paper.
[49,1 x 64.3] 49,4 x 64 cm. Musée Picasso, Paris.
Dation 1979.

OPP.21:129; MPP:960; P.III:1084; PP.21:231;
Z.IV:297; DC.87:12; PA.17b*:91; PA.21g*:275p;
PF.07*:n/a; SP.04*:n/a; TO.99*:24

La maison de l'artiste à Fontainebleau.
Fontainebleau. 5-July/1921. Lead pencil on
paper. 49,1 x 64,3 cm. The Picasso Estate.

OPP.21:133; PP.21:230; Z.IV:295





Façade sur le jardin de la maison de Fontainebleau. Fontainebleau. 6-July/1921. Graphite on paper. 49,1 x 64,3 cm. Musée Picasso, Paris. Dation 1979.

OPP.21:128; MPP:961; P.III:1083; PP.21:232; Z.IV:296; PA.17b*:88; PA.21g*:119p; PF.07*:n/a; SP.04*:n/a; TO.99*:25

La salle à manger à Fontainebleau: Olga au piano. Fontainebleau. 6-July/1921. Graphite on paper. [49,1 x 64.3] 49 x 64 cm. Musée Picasso, Paris. Dation 1979.

OPP.21:130; MPP:970; P.III:1085; PP.21:233; Z.IV:298; DC.87:11; JB.92:134p; LB.58:62p; LU.93:13; PA.17b*:129; PA.20j*:120; PF.07*:n/a; TO.99*:26; TY.03*:n/a





Olga donnant le biberon à Paulo. Fontainebleau. 6-July/1921. Graphite on paper. 64,3 x 49,2 cm. Musée Picasso, Paris. Dation 1979.

OPP.21:131; MPP:962; P.III:1086; PP.21:235; Z.IV:290; PA.17b*:93; PF.07*:n/a; WS.95a*:65

Mère et enfant (Olga et Paulo). Fontainebleau. 6-July/1921. Pencil on paper. [64,3 x 49.1] [64,5 x 49,5] 64 x 49 cm. Sotheby's. #117, L20005, 02/19/20.

OPP.21:132; P.III:1087; PP.21:234; Z.XXX:248





Femme au chien. Fontainebleau. 8-July/1921. Pencil on paper. 49,4 x 64 cm. The Museum of Modern Art, NYC. John S. Newberry Collection.

OPP.21:043; PP.21:236; Z.IV:301; JC.98*:194; JR.07:194p; KS.89:183; NY.62i*:7p; WR.72*:116p

Femme au chien. Fontainebleau. 11-July/1921. Graphite pencil on paper. 25 x 32 cm. Private collection.

OPP.21:106; P.III:1043; PP.21:237; Z.IV:303; BL.06*:119p; JB.92:137p; JC.98:93p





Intérieur. Fontainebleau. 11-July/1921. Graphite. 32 x 25 cm. Private collection.

OPP.21:349; PP.21:239; Z.IV:291

Bébé. Fontainebleau. 11-July/1921. Graphite. 32 x 25 cm. The Picasso Estate.

OPP.21:350; P.III:1088; PP.21:238; Z.IV:293





Femme au chien. Fontainebleau. 12-July/1921.
Lead pencil on paper. 24 x 31 cm. Sotheby's.
#451, L04006, 02/04/04.

OPP.21:107; P.III:1044; PP.21:240; Z.IV:302;
BN.59*:159; HJ.96:52p; WI.51*:139

La femme de l'artiste. Fontainebleau. 12-July/1921.
Graphite. 64 x 49 cm. Private collection.

OPP.21:348; PP.21:241; Z.IV:276





Enfant assis. Fontainebleau. 14-July/1921. Lead pencil on paper. 64 x 49 cm. The Picasso Estate.

OPP.21:135; P.III:1092; PP.21:242; Z.IV:277; JC.98*:178

Maternité. Fontainebleau. 25-July/1921. Pencil on paper. 64,5 x 49,5 cm. Fundación Almine & Bernard Ruiz-Picasso para el Arte.

OPP.21:190; PP.21:044; Z.IV:294; EC.16*:107;
JR.14*:137p; MG.04b*:55; PA.17b*:92; TK.00*:49;
TO.96b*:160; UP.00:498; WR.80*:228p; WS.95a*:55





Tête de femme (Étude). Fontainebleau. [Summer] August/1921. Sanguine & charcoal on paper. [64 x 49] 63,5 x 50 cm. Musée Picasso, Paris. Dation 1979.

OPP.21:006; MPP:964; P.III:1075; PP.21:271; Z.IV:344;
CK.10:218; MA.08a*:n/a; PD.06*:246p; PF.07*:n/a;
PP.20*:149; WR.96:104p

Tête de femme. Fontainebleau. August/1921. Red & black chalk on paper. [79,5 x 68] 64,1 x 49,2 cm. Sotheby's. #7, N09430, 11/04/15. Formerly Adolph Alfred Taubman Collection.

OPP.21:038; P.III:1119; PP.21:278; Z.IV:354





Olga et Paulo Picasso. Fontainebleau. 10-August/1921. Modern print from an original negative. 10,7 x 6,7 cm. Fundación Almine & Bernard Ruiz-Picasso para el Arte. Olga Ruiz-Picasso Archives.

OPP.21:291; EC.16*:108; JR.14*:136p

Tête de femme. Fontainebleau. September/1921. Pastel on paper mounted on board. [65] 63,5 x 50 cm. Christie's. #30, 11/13/89. Formerly Mr. & Mrs. Billy Wilder Collection.

OPP.21:020; P.III:1124; PP.21:282; Z.IV:347; DK.61*:88; EC.02:372; PA.48e*:n/a; RP.67a:11





Tête de femme. Fontainebleau. [Summer] September/1921. Pastel on wove paper. [63,5 x 50] 65,1 x 50,2 cm. The Metropolitan Museum of Art, NYC. (Inv 1984.433.270). Bequest of Scofield Thayer, 1982.

OPP.21:035; P.III:1114; PP.21:279; Z.IV:346; AB.39a*:158; AB.68:22; BO.39*:41; CB.22:4; GT.10*:68; JR.07:196p; NY.24a*:31

Femme au chapeau blanc. Paris. Fall/1921. Oil on canvas. 118 x 91 cm. Musée de l'Orangerie, Paris. (Inv RF.1963.72). Jean Walter et Paul Guillaume Collection.

OPP.21:016; P.III:1134; PP.21:292; Z.IV:352; GL.00*:79; GP.32*:118; KZ.32*:111; LE.21*:101; MA.22a*:66; MD.02*:145p; ND.01*:14; PA.29b*:n/a; PA.46c*:67; TB.10*:41





La lecture de la lettre. [Paris]. Fall/1921. Oil on canvas. 184 x 105 cm. Musée Picasso, Paris. Dation 1979.

OPP.21:028; MPP:72; P.III:1158; PP.21:304; AP.92:24; FS.82:100p; GC.96:177p; GG.87:80p; HN.00*:28; JR.96:120p; MA.08a*:n/a; MN.80*:n/a; MP.85:67; MR.03*:n/a; MS.24*:10; PA.21g*:104p; PA.79a*:117; PD.09:238p; PD.93:29; RW.90c:291; SD.05*:44; SM.19*:n/a; SP.04*:n/a; TY.03*:n/a; UP.00:504; VR.90:46p; WR.80*:234p; WW.91:281p

Mère et enfant. Paris. Fall/1921. Oil on wood panel. 14,5 x 9,5 cm. Fundación Almine & Bernard Ruiz-Picasso para el Arte.

OPP.21:039; P.III:1153; GA.00*:41; GC.96:176p; JC.98*:185; JR.14*:140p; MG.04b*:57; MG.13*:53p; MG.18*:105p; MI.01*:59; PA.17b*:163; TK.00*:50; UP.00:497; VR.90*:26





Femme au chapeau. Paris. Fall/1921. Pastel & charcoal on canvas. 130 x 97 cm. Musée Picasso, Paris. Dation 1979.

OPP.21:040; MPP:71; P.III:1135; PP.21:297; Z.IV:365; GM.11:269p; MP.85:66; PA.79a*:116; RS.88:56p; TY.03*:n/a

Nature morte au paquet de cigarettes. Paris. Fall/1921. Oil on canvas. [19 x 23,5] 20 x 24.5 cm. Private collection.

OPP.21:077; P.III:1147; PP.21:090; GL.84*:8





Composition: baquet de tabac bleu. Paris. [Fall/1921]. Oil on canvas. 30 x 17 cm. Fundación Almine & Bernard Ruiz-Picasso para el Arte.

OPP.21:109; P.III:1152; BS.12*:37; CG.04*:10; MG.04b*:56; MI.01*:65



Femme au chapeau bleu à fleurs. [Paris]. Fall/1921. Charcoal & pastel on paper. 64 x 49,5 cm. The Museum of Modern Art, NYC. (Inv 454.1986). Gift of Jacqueline Roque Picasso in honor of the Museum's continuous commitment to Pablo Picasso's art, 1986.

OPP.21:145; P.III:1126; GM.11*:72; RJ.86*:112; WR.12a:98



Femme au chapeau et au missel. Fontainebleau. Fall/1921. Graphite [pencil] on paper. 106,7 x 74,9 cm. Private collection. Courtesy Richard Gray Gallery. Formerly Marina Picasso Collection. (Inv 03094).

OPP.21:146; P.III:1127; PP.21:295; Z.XXX:260; GM.11*:74; MP.81*:130

Femme au missel. Paris. Fall/1921. Graphite, charcoal & gouache on paper. 105 x 75 cm. Fundación Almine & Bernard Ruiz-Picasso para el Arte.

OPP.21:147; P.III:1128; PP.21:296; Z.XXX:259; GA.00*:40; GM.11*:73; IB.05*:54; JR.14*:125p; MG.04b*:53; MG.04b*:53; MI.01*:60





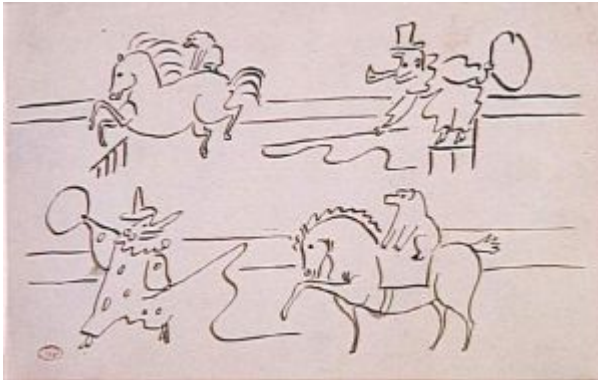
Buste de femme au chapeau et tête de femme de profil. Paris. Fall/1921. Charcoal & sanguine on paper. 108,5 x 74 [108 x 75] cm. The Picasso Estate.

OPP.21:148; P.III:1129; PP.21:294; Z.XXX:261

Jeune femme au chapeau rouge. Paris. [Fall]/1921. Pastel on cardboard [paper]. 64 x 49 [97] cm. Musée National d'Art Moderne, Centre Georges Pompidou, Paris. (Inv AM.2002-130). Dation Alex Maguy-Glass.

OPP.21:170; P.III:1136; PP.21:251; Z.IV:353





Scènes de cirque: singe-écuyer, Auguste et clown blanc dresseurs (Projet pour une timbale). Paris. [Fall]/1921. Pen & ink on blue writing paper. 13,3 x 21 cm. Musée Picasso, Paris. Dation 1979.

OPP.21:218; MPP:1002; PP.21:308; Z.XXX:120

Deux femmes aux chapeaux. [Fontainebleau] Paris. [Summer] Fall/1921. Pastel on paper. [104 x 75] 105,1 x 74,9 cm. Private collection.

OPP.21:245; P.III:1108; PP.21:250; Z.IV:358; AM.31*:38; BO.36*:13; CH.37a*:22; CH.39a*:2; DT.37*:8; GM.11*:71; HT.33*:53; LO.31*:18; NY.21g*:36; NY.33a*:3; NY.37f*:6; RI.41*:174; UW.88:41c; ZU.88*:7





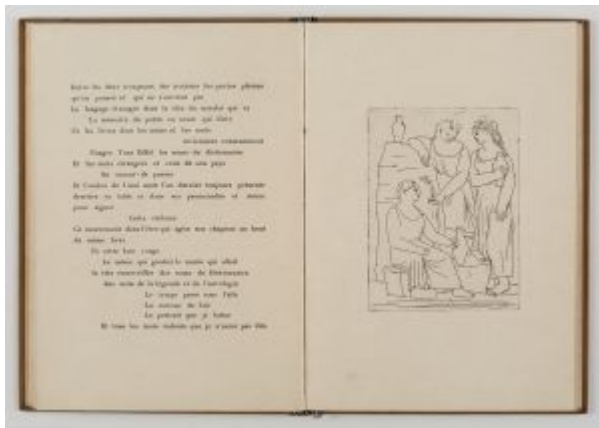
Scène de cirque: clown blanc jouant de la guitare et danseuse nue (Projet pour une timbale). Paris. [Fall]/1921. Pen & ink on blue writing paper. 7,6 x 20,7 cm. Musée Picasso, Paris. Dation 1979.

OPP.21:253; MPP:1004; PP.21:310

Scène de cirque: clown blanc jouant de la guitare et singe sur une boule (Projet pour une timbale). Paris. [Fall]/1921. Pen & ink on blue paper. 7,6 x 20,7 cm. Musée Picasso, Paris. Dation 1979.

OPP.21:254; MPP:1003; PP.21:309





Trois femmes à la fontaine (Pierre Reverdy, Cravates de Chanvre). Paris. Fall/1921. Etching, edition 15. 23,5 x 16,7 cm. Museum Ludwig, Köln. (Inv ML/G 1994/076).Schenkung 1994. Also Christie's. #120, 5443, 05/23/06.

OPP.21:331; B.I:47; Ba:64.B; GC:11.2

Baigneuses (Pierre Reverdy, Cravates de Chanvre). Paris. Fall/1921. Etching. [23,2 x 15,9] 23 x 16,2 cm. Museum Ludwig, Köln. (Inv ML/G 1994/076).Schenkung 1994. Also Christie's. #183, 5059, 04/29/04.

OPP.21:332; B.I:48; GC:11.3;
WO.92*:157; WR.80:223p





Les baigneuses. Paris. Fall/1921. Etching on black paper. 11,8 x 8,8 cm. Musée Picasso, Paris.

OPP.21:333; MPP:2024

Nu agenouillé. Paris. [Fall]/1921. Graphite on paper. 23,5 x 11,5 cm. Private collection.

OPP.21:384; PP.21:305; Z.XXX:245



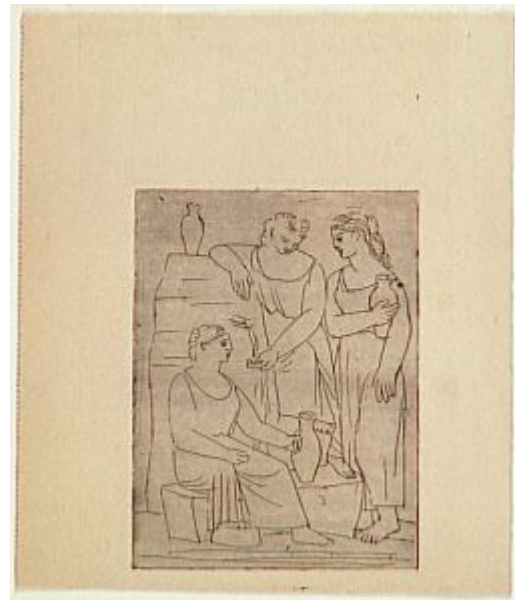


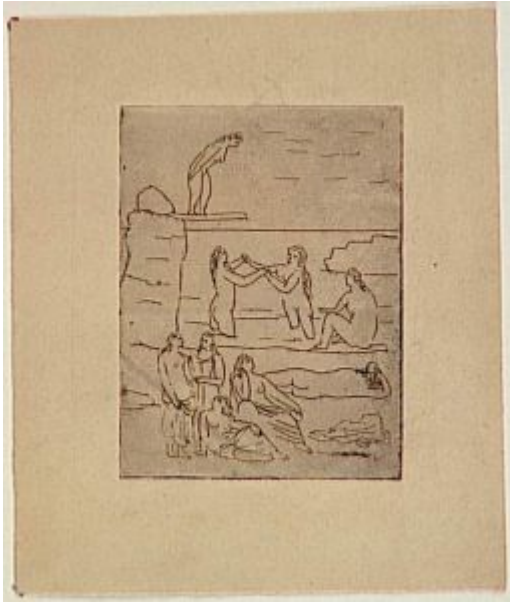
Nu au singe. Paris. [Fall]/1921. Graphite on paper. 32 x 10 cm. Private collection.

OPP.21:385; PP.21:306; Z.XXX:246

Trois Femmes à la fontaine. Paris. [Fall/1921]. Etching. 11,8 x 8,9 cm. Musée Picasso, Paris. Dation 1979.

OPP.21:428; Ba:64; MPP:2022





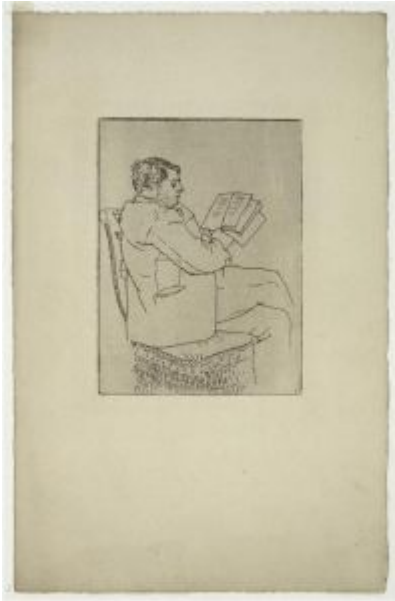
Les baigneuses. Paris. [Fall/1921]. Etching. 11,8 x 8,9 cm. Musée Picasso, Paris. Dation 1979.

OPP.21:429; Ba:65; MPP:2023



Femme accoudée. Paris. Fall/1921. Pastel on paper. [104,7 x 75 cm. Christie's. #8A, 15977, 11/11/18.

OPP.21:030; P.III:1149; PP.21:293; Z.IV:307;
BU.30*:41; GP.32*:157; JC.40:109p; NY.02e*:7;
NY.32i*:10; PA.51b*:30; PA.52h*:46



Portrait de Pierre Reverdy lisant rue La Boétie. Paris.
Fall/1921~Winter/1922. Etching. 11,8 x 8,8 cm. Musée Picasso, Paris.
Dation 1979.

OPP.21:426; Ba:63; MPP:2021

Tête de bébé (Paulo). Paris. 8-November/1921. Pencil
& sanguine [Oic]. 16 x 12,3 cm. Private collection.

OPP.21:214; P.III:1156; PP.21:299; Z.IV:367



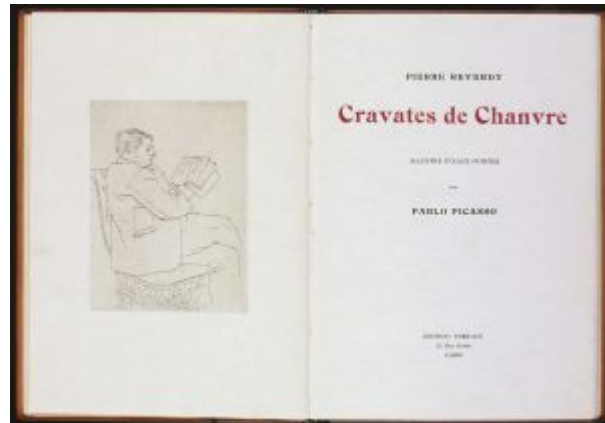


Portrait de Pierre Reverdy. Paris. 15-November/1921. Lead pencil on paper. 16 x 12,5 cm. Private collection.

OPP.21:089; P.III:1148; PP.21:301; Z.XXX:266; JL.71:239p

Portrait de Pierre Reverdy (Pierre Reverdy, Cravates de Chanvre). Paris. 15-November/1921 [1922]. Etching, edition 132 (Frontispiece of Pierre Reverdy's *Cravates de chanvre*, 1922). 11,8 x 8,8 cm. Museum Ludwig, Köln. Also Sotheby's. #170, PF6025, 10/11/06.

OPP.21:120; B.I:46; Ba:63.B; GC:11.1; P.III:1145; JR.07:182p; JR.21:861p; MC.11:140p; PP.19:262p; RB.99:121p





Portrait de Pierre Reverdy. Paris. [Mid-November]/1921. Pencil on squared paper. 16,5 x 10,5 cm. Musée Picasso, Paris. Dation 1979.

OPP.21:041; MPP:973.r; PP.21:302; AB.05a:9

Portrait de Pierre Reverdy. Paris. [Mid-November]/1921. Lead pencil on graph paper. 16,5 x 10,5 cm. Musée Picasso, Paris.

OPP.21:251; MPP:973.v; PP.21:303





Picador et taureau. Paris. End/1921. India ink on paper. 24 x 31,6 cm. Musée Picasso, Paris.

OPP.21:174; MPP:995r; PP.21:322

Taureau étripant un cheval. Paris. End/1921. India ink on paper. 24 x 31,6 cm. Musée Picasso, Paris.

OPP.21:422; MPP:995v; PP.21:323





Portrait de Vicente Huidobro. Paris. 10-December/1921.
Pencil on buff paper laid down on board. 31,2 x 24,2 cm.
Christie's. #153, 1571, 11/02/05.

OPP.21:260; MA.01c*:52; SI.96b*:n/a

Femme nue debout. [Paris]. End/1921. Oil on
canvas [OIC]. 27 x 23 cm. Private collection, New
York.

OPP.21:175; P.III:1160; PP.21:318; Z.IV:359;
AB.05b:19; JR.62*:4.11





Portrait d'Olga. Paris. Winter/1921~1922. Pastel & charcoal on paper, mounted on canvas. 127 x 96,5 cm. Musée des Beaux-Arts, Grenoble. (Inv DG 1990-6-6). On loan from Musée Picasso, Paris. Jacqueline Roque Picasso Collection. Dation 1990.

OPP.21:011; MPP:1990.70; P.III:1137; PP.21:316; BE.09:222p; GR.90*:67; JC.98*:184; PA.04e*:n/a; PA.17b*:94; PD.06*:241p; PD.09:211p; RO.17*:138; UP.00:529; WR.96:315p

Portrait d'Olga (Pour mon fils Paul). Paris [Dinard]. Winter/1921~1922 [Summer/1922]. Sanguine on paper [Subsequently signed and dated 12/01/63]. [107 x 71] 100 x 90 cm. Stolen. Formerly Christine Ruiz-Picasso Collection.

OPP.21:054; P.III:1261; PP.21:317; DC.87:286; JL.71:234p; JR.07:217p





Le chien et le coq. [Fontainebleau] Paris. [Spring] Winter/1921~1922. Oil on canvas. 159,4 x 76,5 cm. Yale University Art Gallery. (Inv 1958.1). Gift of Stephen C. Clark, B.A. 1903.

OPP.21:105; FM:958; P.III:1038; PP.21:311; Z.IV:335; BO.57a*:116; CH.41a*:1; CL.66*:23a; CP.95:103p; DL.67*:32; EC.02:318; JB.92*:78; JB.96:84; JR.62*:3.25; ME.44*:56/51p; NY.42c*:n/a; NY.42f*:n/a; NY.55f*:2; NY.55m*:23; RR.76:XV; SC.71:129; SF.09*:11; TO.49*:13; TO.77:57; WR.80*:220p

Enfant devant un coussin bleu. Paris.
Winter/1921~1922. India ink & pastel on paper. 22 x 15,5 cm. Marina Picasso Collection. Courtesy Galerie Jan Krugier, Geneva.

OPP.21:110; P.III:1154





Tête de femme. Paris. [First-Quarter/1922]
Winter/1921~1922. Oil on panel [canvas]. [23 x 19] 25,4 x
20,3 cm. Sotheby's. #20, N08125, 11/02/05.

OPP.21:166; P.III:1162; PP.21:315; Z.IV:355; NT.41*:n/a;
RI.41*:175; SF.39a*:Y-199; SL.48*:35

Verre et journal. Paris.
Winter/1921~1922. Pastel on paper. 32 x
25 cm. Private collection, Madrid. Formerly
Galería Theo, Madrid.

OPP.21:176; P.III:1161; PP.21:122;
Z.XXX:280; FC.00*:40; MA.74*:43;
MA.75a*:34; MA.77b*:46p





Femme dans un fauteuil. Paris. Winter/1921~1922. Oil on canvas. [27 x 23] 27,1 x 23,7 cm. National Gallery of Art, Washington, DC. (Inv 2011.60.43). The John U. and Evelyn S. Nef Collection.

OPP.21:177; P.III:1164; PP.21:319; Z.IV:360;
CH.31a*:222; JL.71:76p; WA.01*:42; WA.91*:318-319p

Tête d'homme. Paris. Winter/1921~1922. Pastel & charcoal on paper. 65 x 50 cm. Museum Ludwig, Köln. (Inv ML/Z 2001/049). Schenkung 2001. Loan since 1994. Formerly Mr. & Mrs. Joseph Weinstein, NY; Mrs. Charles H. Russell Collection.

OPP.21:207; P.III:1156b; PP.22:250; Z.V:96;
AB.39a*:170; AB.46:125p; JR.62*:4.23; WO.92*:29





Mère et enfant au bord de la mer: enfant assis (Étude). Paris. 23-December/1921. Charcoal, sanguine & white chalk on paper. 74 x 104 cm. Musée des Beaux-Arts, Rennes. On loan from Musée Picasso, Paris. Jacqueline Roque Picasso Collection. Dation 1990.

OPP.21:125; MPP:1990.69; P.III:1150; PP.21:313; Z.XXX:264; GR.90*:66; JC.98*:179; PA.04e*:n/a; PA.17b*:87; PD.06*:239p; WS.95a*:59

Mère et enfant (Maternité). Paris. 23-December/1921. Charcoal & sanguine on paper. 75 x 104 cm. Frederick R. Weisman Art Foundation, Los Angeles. (Inv 1132 FRWAF). Formerly Marina Picasso Collection. (Inv 03123).

OPP.21:127; P.III:1151; PP.21:314; Z.XXX:265; MP.81*:131





Le décor de Quadro Flamenco: spectateurs dans une loge (Étude). Paris. 1921. Lead pencil. [26,5 x 20] 16 x 10,5 cm. Private collection.

OPP.21:180; PP.21:144; Z.IV:246; BA.03a*:106; DC.87:298; TO.96b*:133

Pipe et paquet de tabac. Paris. 1921. Gouache over pencil on paper laid down on board. 12,7 x 16,5 cm. Galeria Mayoral, Barcelona. 2008. Formerly Christie's. #0152, 1902, 11/07/07.

OPP.21:184





Nu vu de dos. Paris. [Summer/1919] [1920~] 1921. [Conté crayon] Charcoal on grey paper. [62,5 x 47] 63,5 x 46,5 cm. Museum Ludwig, Köln. (Inv L/Z 1994/031). Schenkung 1994. Formerly Walter P. Chrysler, Jr. Collection.

OPP.21:208; P.III:992bis; PP.19:244; Z.III:435; AB.39a*:64; AB.46:114p; CK.10*:214; WO.92*:28

Verre et paquet de tabac. Paris. 1921. Metal sheeting, cut out, folded & painted & wire. 14,7 x 49,2 x 16,3 cm. Musée Picasso, Paris. Dation 1979.

OPP.21:246; FM:961; MPP:259; P.III:1133; PP.21:291; WS:62; Z.IV:368; AB.07*:n/a; BJ.19*:n/a; EC.02:299; MA.08a*:n/a; PA.23a*:67p; PA.79a*:121



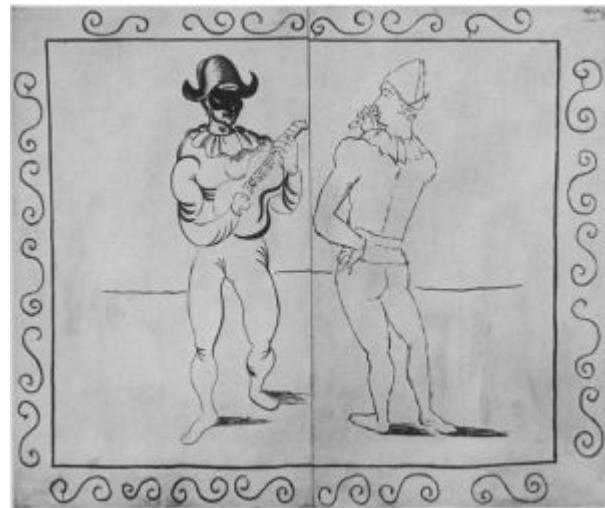


Nature morte devant une fenêtre. Paris. 1921. Chalk on paper. 15 x 11 cm. Private collection.

OPP.21:259; JP.60:27

Deux musiciens. Paris. 1921. Mural. 177,8 x 188 cm. Mr. and Mrs. Gregor Piatigorsky.

OPP.21:264; DK.61*:89



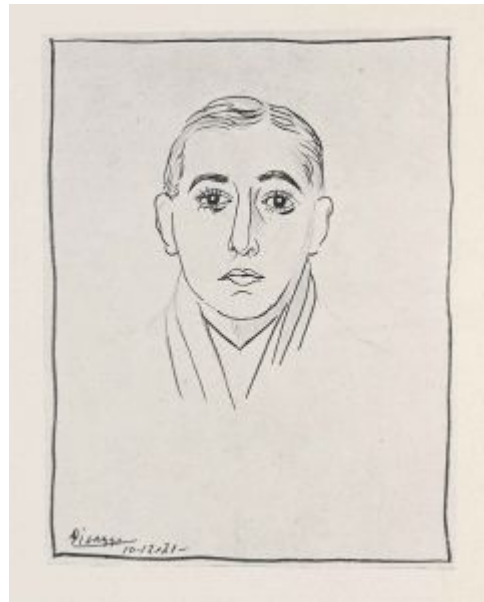


Jeune garçon au chapeau (d'après Le Nain), Paris. 1921.
Graphite on paper. [31 x 21] 28 x 19,5 cm. Musée Picasso, Paris.
(Inv APPH9853).

OPP.21:265; PP.21:298; Z.XXX:147; LE.21*:201; SG.96:2.24

Portrait de Vicente Huidobro, Paris. 1921. Print
[After *Portrait de Vicente Huidobro*]. 23,6 x 19 cm.
Christie's. #367, 7558, 11/27/12.

OPP.21:267



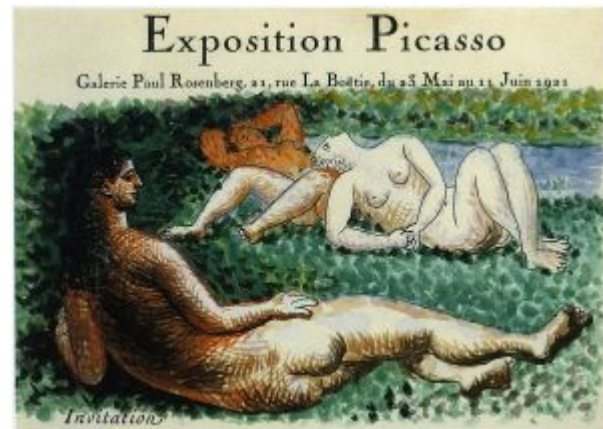


Femmes à la fontaine. Fontainebleau. 1921. Sanguine. 32 x 24,5 cm. Private collection, Madrid.

OPP.21:270; FC.00*:42

Trois baigneuses. Paris. 1921. Watercolor. 10 x 13,5 cm. Private collection.

OPP.21:272; RD.96*:69





Portrait de Paulo (Pour Paulo). Paris. 1921. Gouache. S/U. Private collection.

OPP.21:283; GP.96:368p

Groupe de trois femmes nues. Paris. 1921. Gouache, colored pencil and pencil over photographic reproduction laid down on card. 20 x 24,9 cm. Christie's. #152, 2889, 11/06/14.

OPP.21:285





Femme assise en chemise. Paris. [1921]. X-radiograph of oil on canvas [Underlayer of *Femme assise en chemise*]. 92 x 73 cm. Tate Modern, Liverpool. (Inv N04719). C. Frank Stoop Bequest, 1933.

OPP.21:288

Joueur de banjo. Paris. 1921. Gouache on paper. 27,3 x 21,3 cm. Virginia Museum of Fine Arts, Richmond. (Inv 47.10.81). T. Catesby Jones Collection.

OPP.21:292





Verre et fruits. Paris. 1921. Oil on canvas. 31,5 x 39 cm. Sotheby's. #67, N09340, 05/05/15.

OPP.21:294

Cuadro flamenco. Fragment de la toile de décor (Loge, en haut à gauche). Paris. 1921. Distemper on jute. [140 x 134] 135 x 135 cm. Private collection.

OPP.21:296; PP.21:149; Z.XXX:159;
BH.06*:102p; DC.87:300





Détail du décor du ballet Cuadro Flamenco. Paris. 1921. Oil on canvas [Oic]. 190 x 138 cm. Private collection. Formerly Yvon Helft Collection.

OPP.21:336; PP.21:148; Z.IV:249

Nature morte: journal, verre et paquet de tabac. Paris. 1921. Oil on canvas. 20 x 31 cm. Christie's. #312, 17193, 06/19/19.

OPP.21:354





Portrait de Paul Valéry (Paul Valéry, La Jeune parque). Paris. 1921. Lithograph. 9,5 x 7,5 cm. The Museum of Modern Art, NYC. (Inv 960.1964). The Louis E. Stern Collection.

OPP.21:356

Baigneuses (Pierre Reverdy, Cravates de Chanvre). Paris. 1921. Watercolor on paper. 23,4 x 17 cm. Museum Ludwig, Köln. (Inv ML/G 1994/076). Schenkung 1994.

OPP.21:358



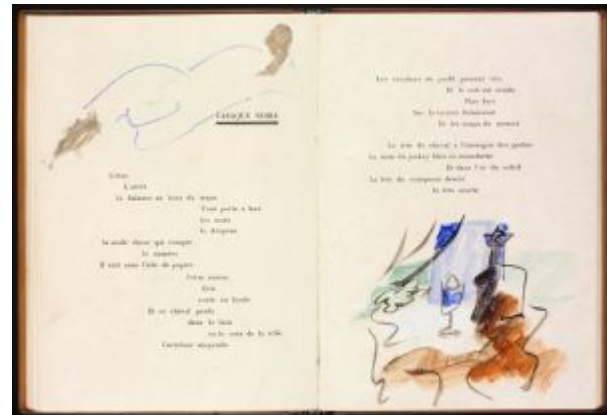


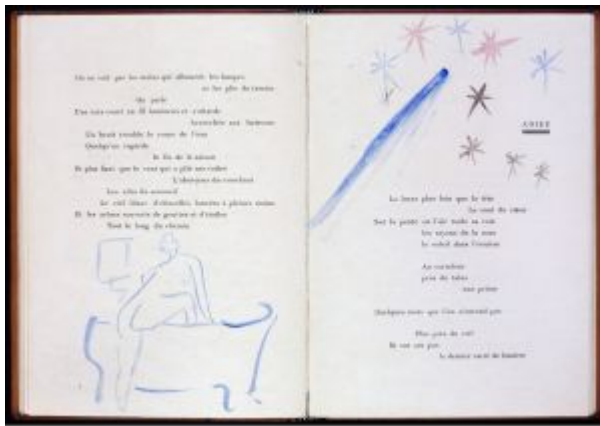
Nature morte (Pierre Reverdy, Cravates de Chanvre). Paris. 1921. Watercolor on paper. 23,4 x 17 cm. Museum Ludwig, Köln. (Inv ML/G 1994/076).Schenkung 1994.

OPP.21:359

Nature morte (Pierre Reverdy, Cravates de Chanvre). Paris. 1921. Watercolor on paper. 23,4 x 17 cm. Museum Ludwig, Köln. (Inv ML/G 1994/076).Schenkung 1994.

OPP.21:360





Baigneuse (Pierre Reverdy, Cravates de Chanvre). Paris. 1921. Watercolor on paper. 23,4 x 17 cm. Museum Ludwig, Köln. (Inv ML/G 1994/076).Schenkung 1994.

OPP.21:361

Nature morte (Pierre Reverdy, Cravates de Chanvre). Paris. 1921. Watercolor on paper. 23,4 x 17 cm. Museum Ludwig, Köln. (Inv ML/G 1994/076).Schenkung 1994.

OPP.21:362





Personnages (Pierre Reverdy, Cravates de Chanvre). Paris. 1921. Watercolor on paper. 23,4 x 17 cm. Museum Ludwig, Köln. (Inv ML/G 1994/076).Schenkung 1994.

OPP.21:363

Tête de femme (Pierre Reverdy, Cravates de Chanvre). Paris. 1921. Watercolor on paper. 23,4 x 17 cm. Museum Ludwig, Köln. (Inv ML/G 1994/076).Schenkung 1994.

OPP.21:364



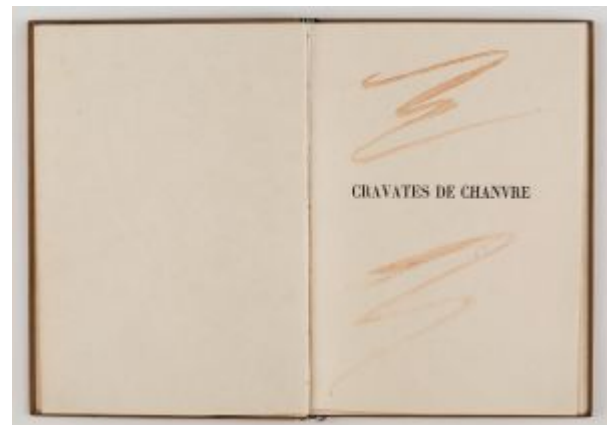


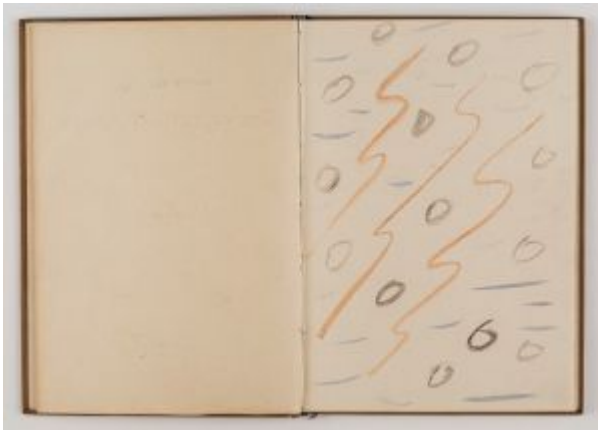
Baigneuses (Pierre Reverdy, Cravates de Chanvre). Paris. 1921. Watercolor on paper. 23,4 x 17 cm. Museum Ludwig, Köln. (Inv ML/G 1994/076).Schenkung 1994.

OPP.21:365

Dessin (Pierre Reverdy, Cravates de Chanvre). Paris. 1921. Watercolor on paper. 23,4 x 17 cm. Museum Ludwig, Köln. (Inv ML/G 1994/076).Schenkung 1994.

OPP.21:366





Dessin (Pierre Reverdy, Cravates de Chanvre). Paris. 1921. Watercolor on paper. 23,4 x 17 cm. Museum Ludwig, Köln. (Inv ML/G 1994/076).Schenkung 1994.

OPP.21:367

Personnages (Pierre Reverdy, Cravates de Chanvre). Paris. 1921. Watercolor on paper. 23,4 x 17 cm. Museum Ludwig, Köln. (Inv ML/G 1994/076).Schenkung 1994.

OPP.21:368





Personnages (Pierre Reverdy, Cravates de Chanvre). Paris. 1921. Watercolor on paper. 23,4 x 17 cm. Museum Ludwig, Köln. (Inv ML/G 1994/076).Schenkung 1994.

OPP.21:369

Tête de femme (Pierre Reverdy, Cravates de Chanvre). Paris. 1921. Watercolor on paper. 23,4 x 17 cm. Museum Ludwig, Köln. (Inv ML/G 1994/076).Schenkung 1994.

OPP.21:370



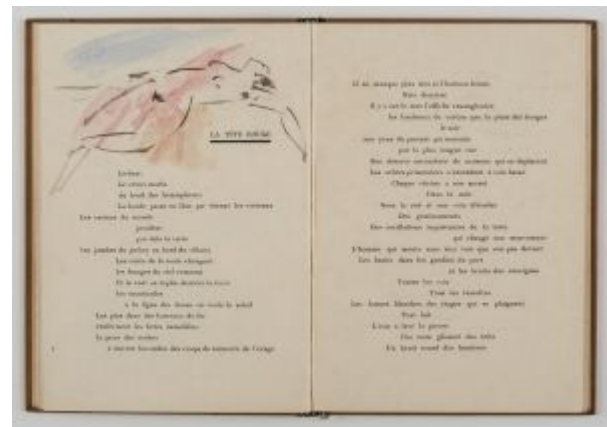


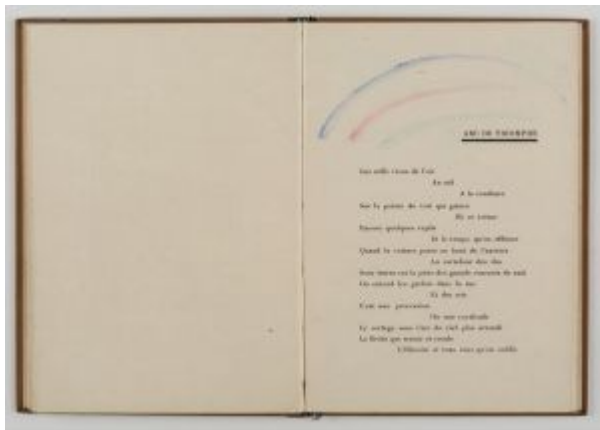
Baigneuse (Pierre Reverdy, Cravates de Chanvre). Paris. 1921. Watercolor on paper. 23,4 x 17 cm. Museum Ludwig, Köln. (Inv ML/G 1994/076).Schenkung 1994.

OPP.21:371

Baigneuse (Pierre Reverdy, Cravates de Chanvre). Paris. 1921. Watercolor on paper. 23,4 x 17 cm. Museum Ludwig, Köln. (Inv ML/G 1994/076).Schenkung 1994.

OPP.21:372





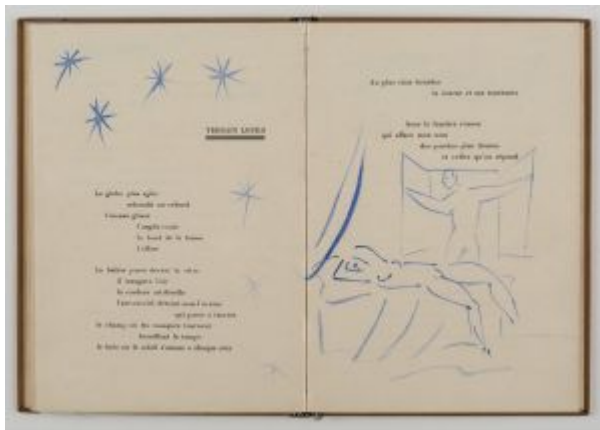
Dessin (Pierre Reverdy, Cravates de Chanvre). Paris. 1921. Watercolor on paper. 23,4 x 17 cm. Museum Ludwig, Köln. (Inv ML/G 1994/076).Schenkung 1994.

OPP.21:373

Dessin (Pierre Reverdy, Cravates de Chanvre). Paris [Montrouge]. 1921. Watercolor on paper. 23,4 x 17 cm. Museum Ludwig, Köln. (Inv ML/G 1994/076).Schenkung 1994.

OPP.21:374



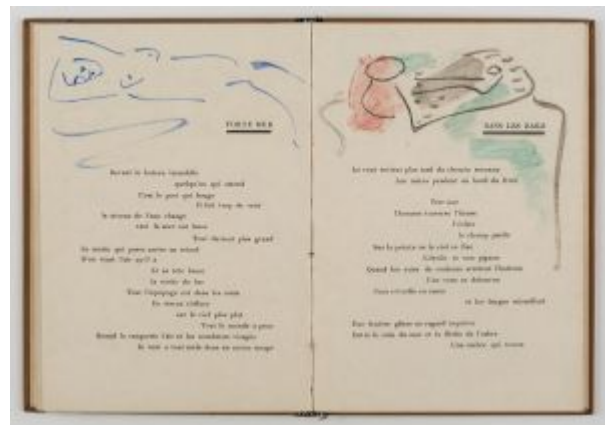


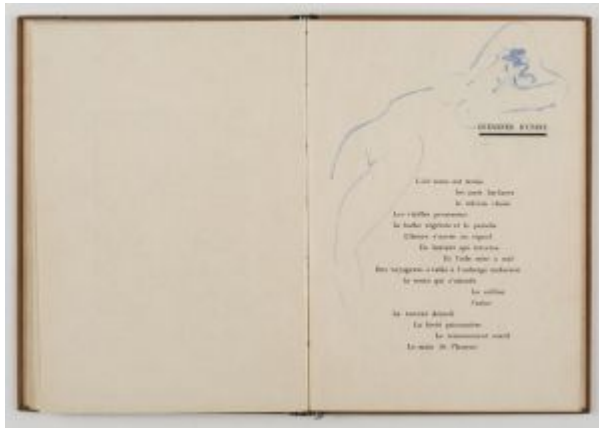
Couple devant une fenêtre (Pierre Reverdy, Cravates de Chanvre). Paris. 1921. Watercolor on paper. 23,4 x 17 cm. Museum Ludwig, Köln. (Inv ML/G 1994/076).Schenkung 1994.

OPP.21:375

Baigneuse (Pierre Reverdy, Cravates de Chanvre). Paris. 1921. Watercolor on paper. 23,4 x 17 cm. Museum Ludwig, Köln. (Inv ML/G 1994/076).Schenkung 1994.

OPP.21:376





Baigneuse (Pierre Reverdy, Cravates de Chanvre). Paris. 1921. Watercolor on paper. 23,4 x 17 cm. Museum Ludwig, Köln. (Inv ML/G 1994/076).Schenkung 1994.

OPP.21:377

Homme assis (Pierre Reverdy, Cravates de Chanvre). Paris. 1921. Watercolor on paper. 23,4 x 17 cm. Museum Ludwig, Köln. (Inv ML/G 1994/076).Schenkung 1994.

OPP.21:378





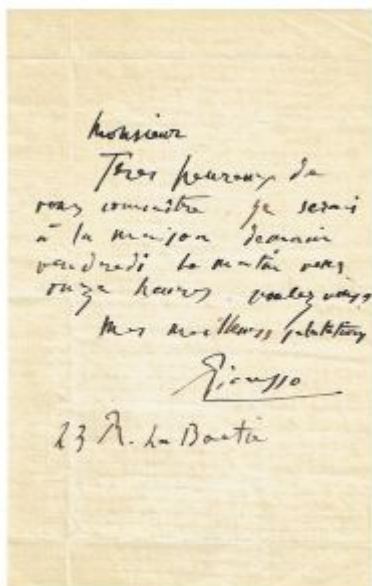
Couverture (Pierre Reverdy, Cravates de Chanvre). Paris. 1921. Mixed media. 23,4 x 17 cm. Museum Ludwig, Köln. (Inv ML/G 1994/076).Schenkung 1994.

OPP.21:379

Violon et journal sur un tapis vert (Le jour). Paris. 1921 [1922]. Oil on canvas. [73 x 92] 73,3 x 92,1 cm. David and Ezra Nahmad Collection. Formerly Helly Nahmad Collection, Monaco/London; Sotheby's. #15, 6768, 11/08/95; Joseph H. Hazen Collection, NY.

OPP.21:421; P.III:1267; PP.22:020; Z.IV:430; CM.94*:n/a; HN.13*:85p; JR.62*:3.26; JR.66b*:n/a; KZ.32*:172; LO.98b*:n/a; MA.22a*:34; NY.55f*:3; NY.55q*:n/a; NY.58i*:n/a; NY.75b*:n/a; RR.09*:18; RT.99*:15; TB.10*:39





Lettre manuscrite. Paris. 1921. Ink on paper. 15,2 x 22,9 cm. KOTTE Autographs GmbH, Rosshaupten.

OPP.21:445

La coiffeuse. Paris. 1921. Pencil on paper. S/U. Private collection.

OPP.21:446; RO.17*:127





Taureau attaquant un cheval. Paris. 1921.
Etching on wove paper, edition 60. 17,8 x 23,8 cm.
Christie's. #203, 8964, 12/01/00.

OPP.21:056; B.I:44; Ba:60.2B; MPB:112.849;
P.III:993; BA.11*:n/a; BA.98b*:n/a; CH.97:35p;
MG.10a*:24; MG.92*:n/a; PA.07a*:168p;
PA.93a*:n/a

Nature morte. Paris. 1921. Gouache & pencil on paper.
21 x 15,5 cm. Christie's. #414, 9774, 11/07/01.

OPP.21:155





Composition avec verre. Paris. 1921. Oil and sand on card. 25,4 x 14,9 cm. Christie's. #367, 2354, 11/04/10. Formerly Sotheby's. #53, N07791, 05/08/01.

OPP.21:158; AB.97b*:168p; IW.84*:29; KK.86*:36; TS.90*:P19

'De la guerre au Sébat' (À Jean Cocteau). [Paris]. 1921. Ink & newsprint on cardboard. [38,7 x 28,6] 39,7 x 28,6 cm. The Abelló Collection. Formerly Sotheby's. #321, 05/12/99.

OPP.21:161; AB.00*:95





Cheval. Paris. 1921~1922. Paper cut-out. 45 x 63,5 cm. Fundación Almine & Bernard Ruiz-Picasso para el Arte.

OPP.21:284; PA.17b*:96

Olga Khokhlova dans le salon de 23, rue La Boétie. Paris. [1921~1922]. Modern print from original negative. 6,5 x 11 cm. Olga Ruiz-Picasso Archives.

OPP.21:290; JR.14*:122p; PA.17b*:56p





Tête de femme. Paris. 1921~1922. Color pencil. 30 x 22 cm. Private collection. Formerly Mr. and Mrs. John W. Warrington Collection.

OPP.21:335; PP.22:003; Z.V:93

Taureau et cheval. Paris. 1921~1923. Charcoal & pencil on wood. 22,5 x 30 cm. Nationalgalerie, Museum Berggruen, Staatlichen Museen zu Berlin.

OPP.21:258; BL.06*:127p; BR.96*:42; CH.10*:220p

